



COLD FOOD/FROZEN FOOD MERCHANTISER



MODEL:

3513 - FROZEN FOOD MERCHANTISER

3514 - COLD FOOD MERCHANTISER

PARTS MANUAL

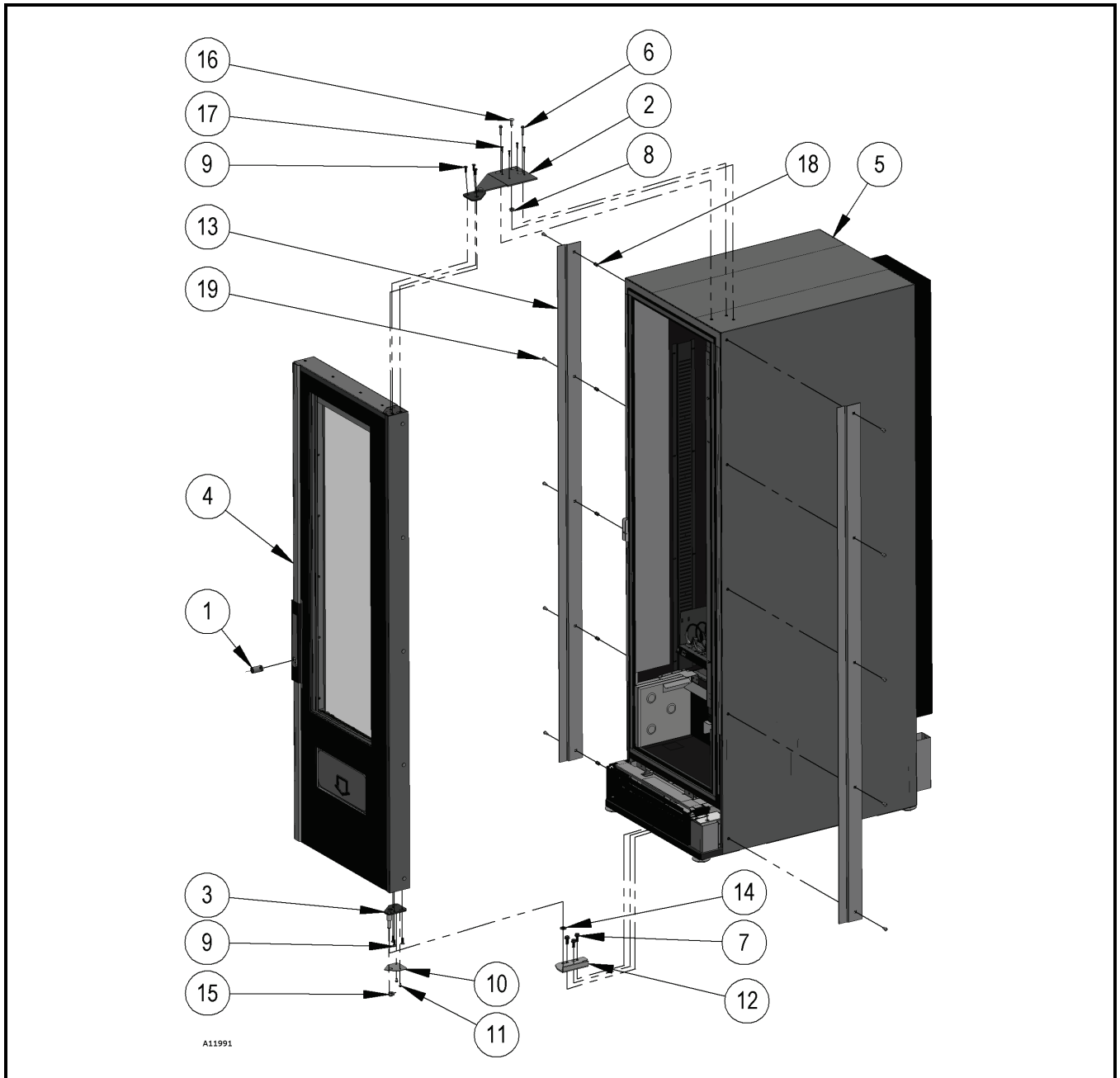
VendNet™

165 North 10th Street
Waukee, IOWA 50263-0488
United States of America

TABLE OF CONTENTS

FINAL ASSEMBLY (FF)	1
<i>FINAL ASSEMBLY PARTS LIST</i>	2
DOOR ASSEMBLY	3
<i>DOOR ASSEMBLY PARTS LIST</i>	5
DELIVERY DOOR ASSEMBLY	7
<i>DELIVERY DOOR ASSEMBLY PARTS LIST</i>	7
TRANSITION SUB-ASSEMBLY	8
<i>TRANSITION SUB-ASSEMBLY PARTS LIST</i>	8
CABINET ASSEMBLY (FF)	9
<i>CABINET ASSEMBLY PARTS LIST</i>	10
CABINET ASSEMBLY (CF)	12
<i>CABINET ASSEMBLY PARTS LIST</i>	13
LIGHT ASSEMBLY (FF)	15
<i>LIGHT ASSEMBLY FF PART LIST</i>	16
LIGHT BOX ASSEMBLY (CF)	17
<i>LIGHT BOX ASSEMBLY CF PARTS LIST</i>	18
ELECTRICAL PANEL ASSEMBLY	19
<i>ELECTRICAL PANEL ASSEMBLY PART LIST</i>	19
COMMON TRAY ASSEMBLY	21
<i>COMMON TRAY ASSEMBLY 110V PARTS LIST</i>	21
EVAPORATOR ASSEMBLY 110V (FF)	23
<i>EVAPORATOR ASSEMBLY PARTS LIST</i>	24
TERMINATED BALLAST ASSEMBLY	25
<i>TERMINATED BALLAST ASSEMBLY PARTS LIST</i>	25
COMPLETE REFRIGERATION ASSEMBLY (FF)	26
<i>COMPLETE REFRIGERATION ASSEMBLY PARTS LIST</i>	26
REFRIGERATION ASSEMBLY 110V (CF)	27
<i>REFRIGERATION ASSEMBLY PARTS LIST</i>	27
CONDENSER ASSEMBLY (CF)	29
<i>CONDENSER ASSEMBLY PARTS LIST</i>	29
EVAPORATOR ASSEMBLY 115V (CF)	30
<i>EVAPORATOR ASSEMBLY 115V PARTS LIST</i>	30
CONTROLLER BOX ASSEMBLY	31
<i>CONTROLLER BOX ASSEMBLY PARTS LIST</i>	31
POWER BOX ASSEMBLY	32
<i>POWER BOX ASSEMBLY PART LIST</i>	32
OPTIONAL SPIRALS	34
OPTIONAL PRICE SCROLLS	35

FINAL ASSEMBLY (FF)



A11991

* SPECIFY COLOR
AR AS REQUIRED

† SPECIFY VOLTAGE/ HEATED/UN-HEATED
‡ SPECIFY SOFTWARE VERSION

FINAL ASSEMBLY PARTS LIST

ITEM NO.	PART NUMBER	3513	3514	DESCRIPTION
1	4060330	1	1	LOCK CYLINDER W/2 KEYS
2	1215974.000330	1	1	TOP HINGE WELD/WRINKLE
3	1215975.000330	1	1	BOTTOM HINGE WELD/BLACK
4	SEE PAGE # 3	1	1	DOOR ASSEMBLY
5	SEE PAGE # 9	1	-	CABINET ASSEMBLY FF
	SEE PAGE # 12	-	1	CABINET ASSEMBLY CF
6	4215175	2	2	12-18 X 1 HWH TEK
7	8801388	3	3	5/16-18X3/4 HWH TYPE-1
8	8810015	1	1	5/16-18 FLANGE LOCK NUT
9	4212089	6	6	1/4-20X3/4 SOCKET HEAD FLAT COUNTERSUNK SCREW
10	4212217.000330	1	-	STRAIN RELIEF RETAINER
11	8800090	2	-	8-32X1/4 PHIL PH MS-S
12	4216371.000330	1	1	BOTTOM HINGE (SF) FORMED
13	4216431.000330	2	2	SIDE ANTI-CHEAT
14	4050767	1	1	3/8 FLAT WASHER-NYLON BLACK
15	4212606	1	-	STRAIN RELIEF RIGHT ANGLE
16	4050099	1	1	5/16-18 X 3/4 CARR BOLT
17	4212505	12	12	#8-3/4 PHIL PAN HEAD TEK SCREW
18	4212937.016	10	10	THREAD INSERT, 1/4-20
19	4212909.001	10	10	1/4-20 X 3/4 BUTTON HEAD

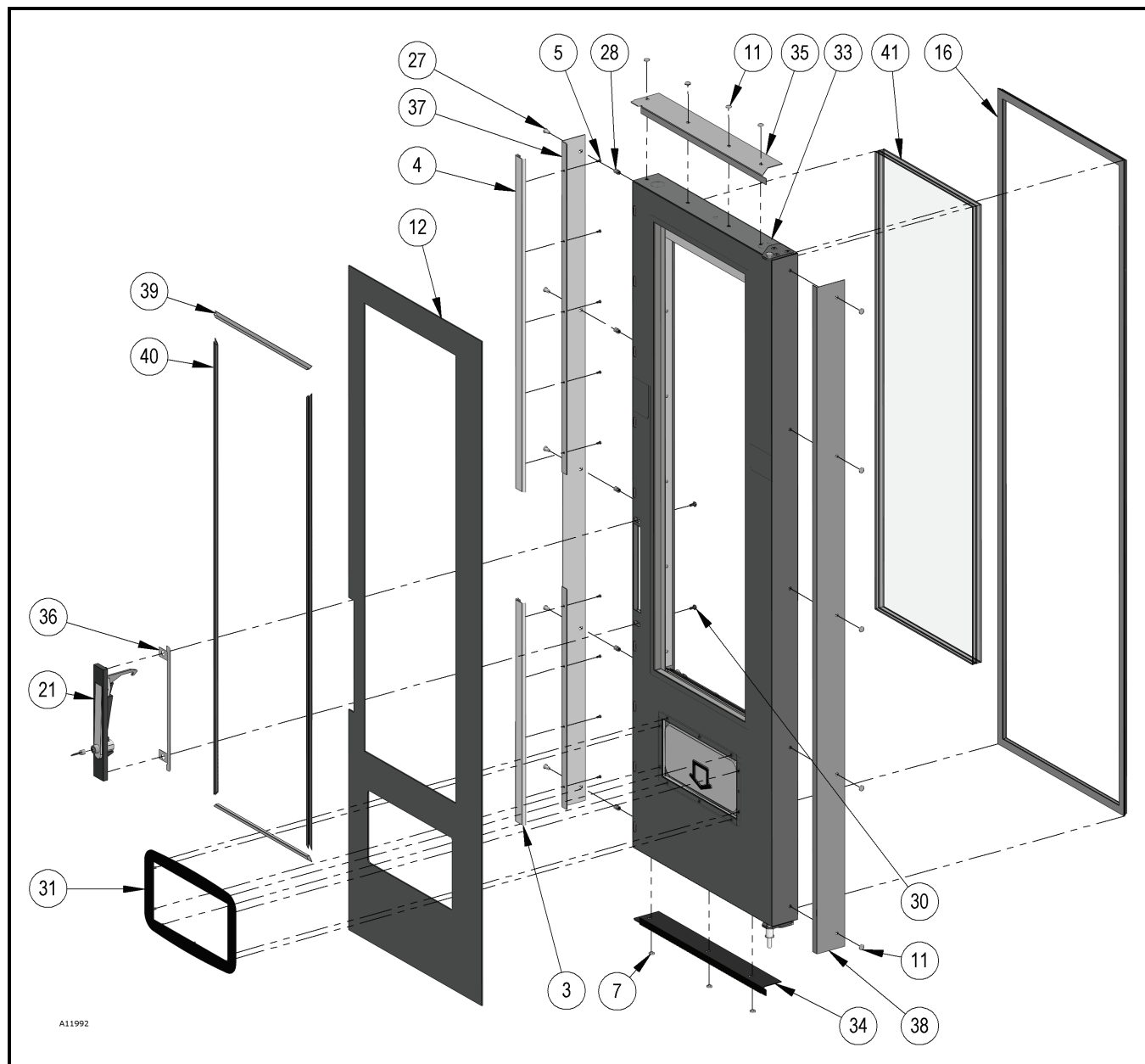
LIST OF PARTS NOT SHOWN

20	4213759	1	1	POWER CORD N. AMERICAN/16
21	4215947	1	-	HEATER WIRE/110VAC-45 WAT
22	4215319	1	1	EXTERNAL MDB CABLE (USD)
23	4215780	1	1	MDB CABLE (GVC2)

* SPECIFY COLOR
AR AS REQUIRED

† SPECIFY VOLTAGE/ HEATED/UN-HEATED
†† SPECIFY SOFTWARE VERSION

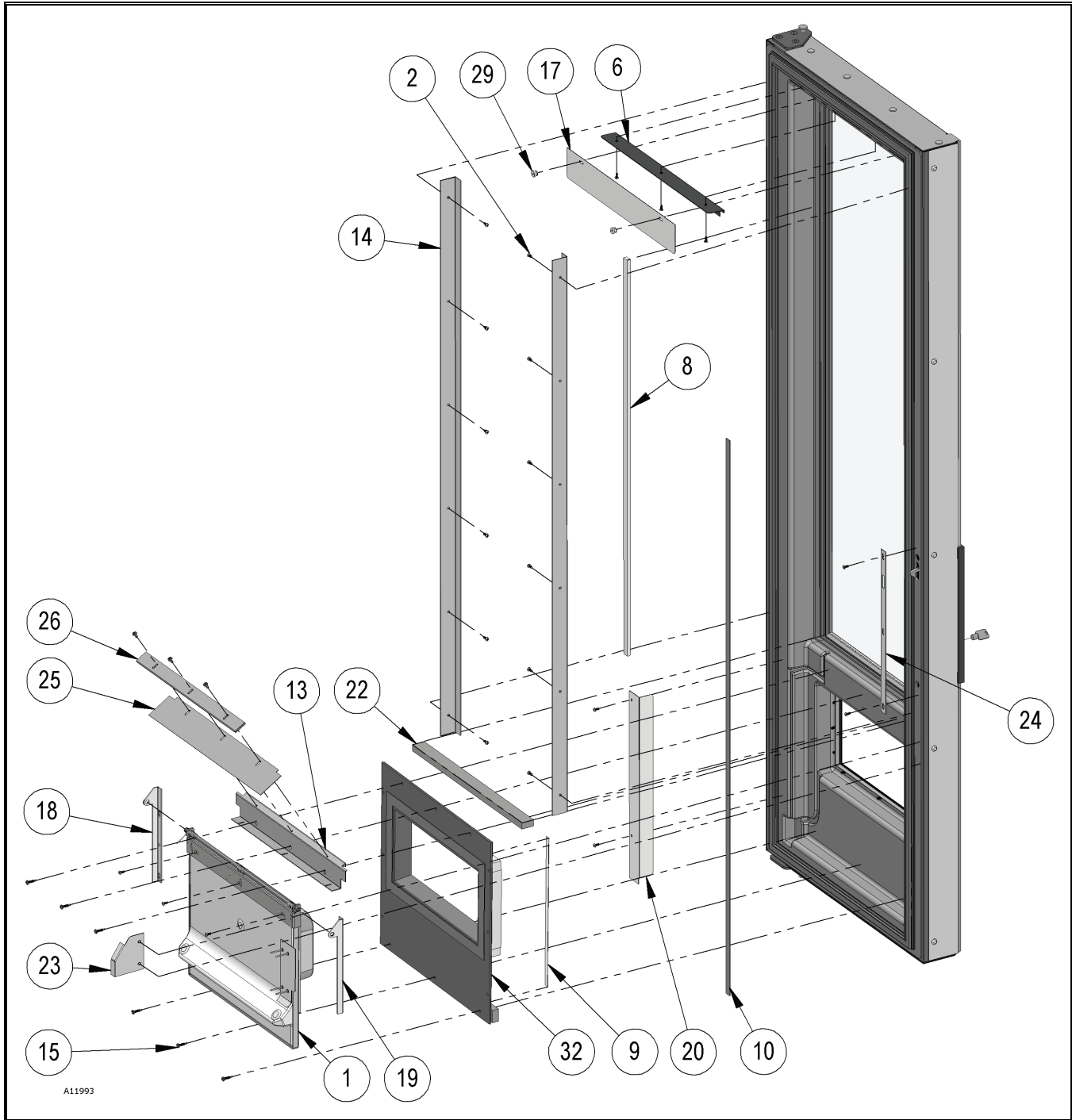
DOOR ASSEMBLY



A11992

* SPECIFY COLOR
AR AS REQUIRED

† SPECIFY VOLTAGE/ HEATED/UN-HEATED
‡ SPECIFY SOFTWARE VERSION



A11993

* SPECIFY COLOR
AR AS REQUIRED

† SPECIFY VOLTAGE/ HEATED/UN-HEATED
†† SPECIFY SOFTWARE VERSION

DOOR ASSEMBLY PARTS LIST

ITEM NO.	PART NUMBER	3513	3514	DESCRIPTION	
1	1216143	1	1	DELIVERY DOOR ASSEMBLY	(SEE PAGE # 7)
2	4050180	50	50	8-18X1/2 PHIL PH TEK	
3	4212911.001	1	1	BOTTOM TRIM CF/FF, 21.618"	
4	4212911.002	1	1	TOP TRIM CF/FF, 32.444"	
5	8800763	13	13	8-32X5/16 PHIL PH TYP	
6	1216442.000330	1	1	WINDOW RETAINER W/STUD COVERS	
7	4050423	3	3	8-18X3/8 PHIL PH TYP-A	
8	4060006.500	3 FT	3 FT	1/4" X 1/2" FOAM TAPE	
9	4208565	15.5FT	15.5FT	DOUBLE SIDED TAPE .750/RE	
10	4209845	20.5FT	20.5FT	PROTECTIVE WINDOW SEAL 1/2"	
11	4210421.002	9	9	1/4" RIVET-BLACK ALUMINIUM	
12	4212627	1	1	BLACK PICA FRONT	
13	4212422.000330	1	1	WINDOW RETAINER BOTTOM BLACK	
14	4212423.000330	2	2	WINDOW RETAINER VERTICAL BLACK	
15	4212505	12	12	#8-3/4 PHIL PAN HEAD TEK	
16	4212550	1	1	DOOR MAGNET GASKET	
17	4213492.002	1	-	ENGLISH FROZEN RIGHT/LEFT	
	4213492.001	-	1	ENGLISH CHILLED RIGHT/LEFT	
18	4212616.001950	1	1	HINGE BRACKET PLATED RIGHT	
19	4212616.002950	1	1	HINGE BRACKET PLATED LEFT	
20	4212623.000330	1	-	WIRE COVER	
21	4212651.001	1	1	BLACK DOOR HANDLE ASSEMBLY	
22	4212681	10.5FT	10.5FT	FOAM GASKET 1/2 X 1	
23	4212688.000330	1	1	DELIVERY COVER FLAT BLACK	
24	4212741.000330	1	1	LATCH OVERLAY FAWN BLACK	
25	4212759	1	1	PRODUCT DEFLECTOR	
26	4212840.000330	1	1	PRODUCT DEFLECTOR OVERLAY	
27	4212909.001	5	5	1/4-20 X 3/4 BUTTON HEAD	
28	4212937.016	5	5	THREAD INSERT, 1/4-20	
29	8330164	2	2	8-32 THUMB NUT-BRASS	
30	8800406	2	2	10-32X1/2 PHIL TH W/EXTERNAL TOOTH LOCK WASHER	
31	1215522.000330	1	1	DELIVERY BEZEL STAKE	
32	1216155.001	1	-	TRANSITION ASSEMBLY	(SEE PAGE # 8)
	1216155	-	1		
33	1216247.001	1	-	DOOR FOAM ASSEMBLY FF	
	1216247	-	1	DOOR FOAM ASSEMBLY CF	
34	4212087.000330	1	1	BOTTOM SIGN RETAINER/WRNK	
35	4212125.000330	1	1	TOP SIGN RETAINER	
36	4212682.000330	1	1	SIGNFACE COVER FAWN BLACK	
37	4212832.000330	1	1	SIDE TRIM RETAINER	
38	4212868.000330	1	1	SIDE LEXAN RETAINER	
39	4212626	2	2	SIGN FACE EXTRUSION TOP/BOTTOM	

* SPECIFY COLOR
AR AS REQUIRED

† SPECIFY VOLTAGE/ HEATED/UN-HEATED
‡ SPECIFY SOFTWARE VERSION

ITEM NO.	PART NUMBER	3513	3514	DESCRIPTION
40	4212626.001	2	2	SIGN FACE EXTRUSION SIDES
41	4210104	1	-	HEATED TRIPLE-PANE GLASS-110
	4212366	-	1	TRIPLE-PANE GLASS

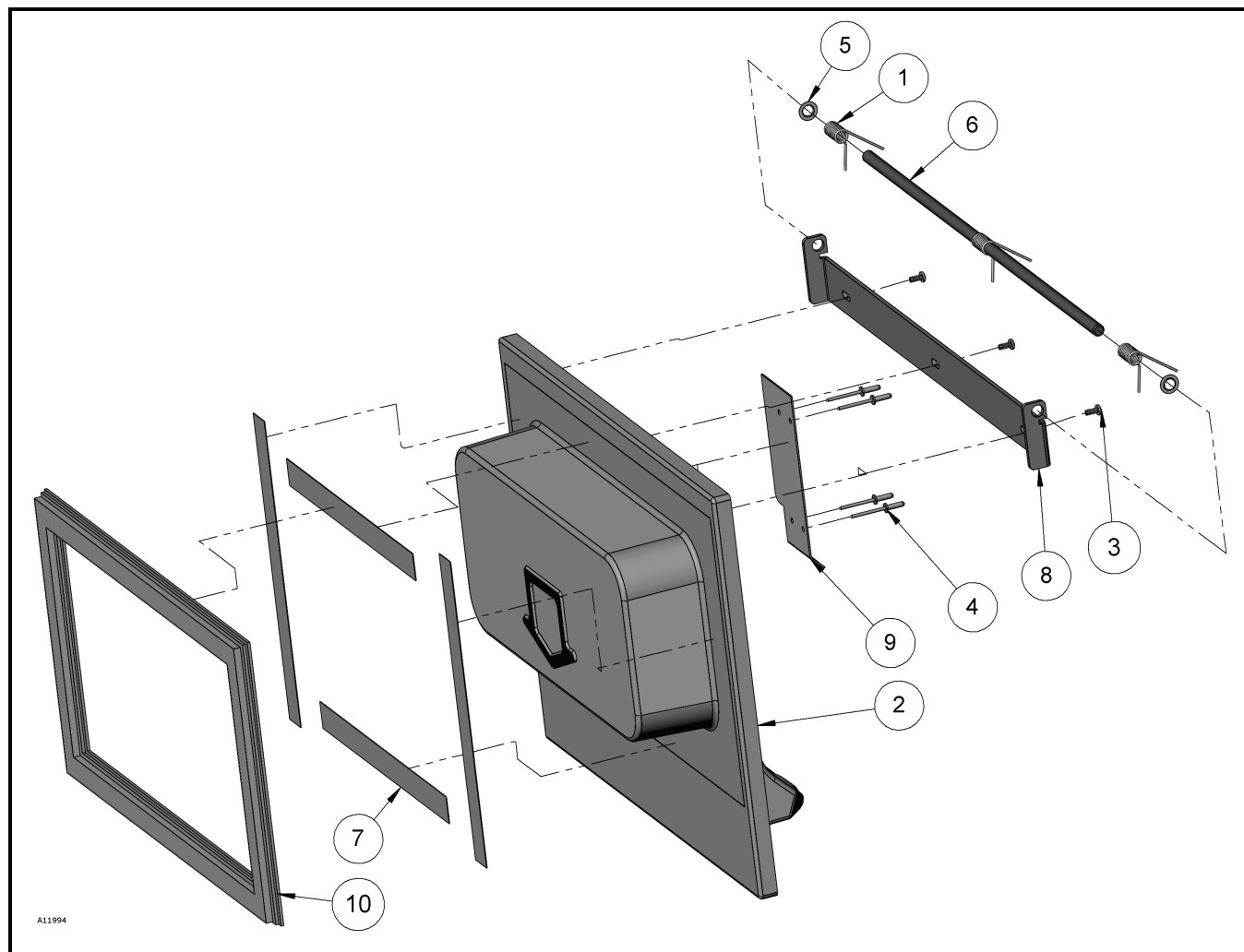
LIST OF PARTS NOT SHOWN

42	1211465.002	1	-	16" GROUND WIRE
43	4215945	1	-	DOOR POWER HARNESS

* SPECIFY COLOR
AR AS REQUIRED

† SPECIFY VOLTAGE/ HEATED/UN-HEATED
†† SPECIFY SOFTWARE VERSION

DELIVERY DOOR ASSEMBLY



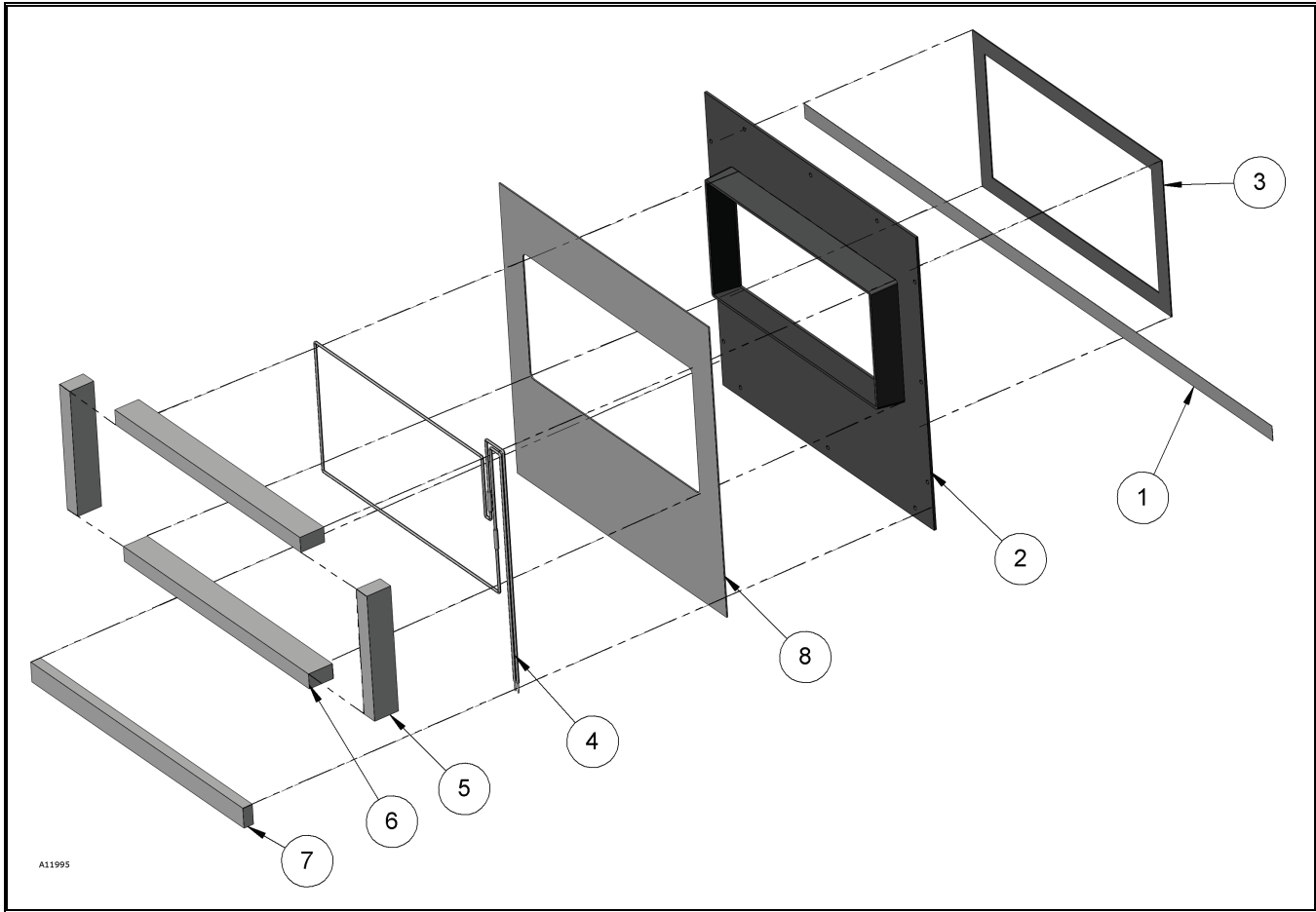
DELIVERY DOOR ASSEMBLY PARTS LIST

ITEM NO.	PART NUMBER	3513	3514	DESCRIPTION
1	1216237	3	3	MODIFIED SPRING
2	1216274.400	1	1	DELIVERY DOOR FOAM ASSEMBLY
3	4050180	3	3	8-18X1/2 PHIL PH TEK SCREW
4	4050667	4	4	1/8X .250 ALUMINIUM POP RIVET
5	4203398	2	2	WASHER-PUSH/.312
6	4203399.001	1	1	SHAFT-DELIVERY
7	4208565	3.7 FT	3.7 FT	DOUBLE SIDED TAPE .750/RE
8	4212617.000330	1	1	HINGE PLATE DELIVERY DOOR
9	4212690.000330	1	1	DELIVER DOOR FILLER
10	4212753	1	1	DELIVERY DOOR GASKET

* SPECIFY COLOR
AR AS REQUIRED

† SPECIFY VOLTAGE/ HEATED/UN-HEATED
‡ SPECIFY SOFTWARE VERSION

TRANSITION SUB-ASSEMBLY



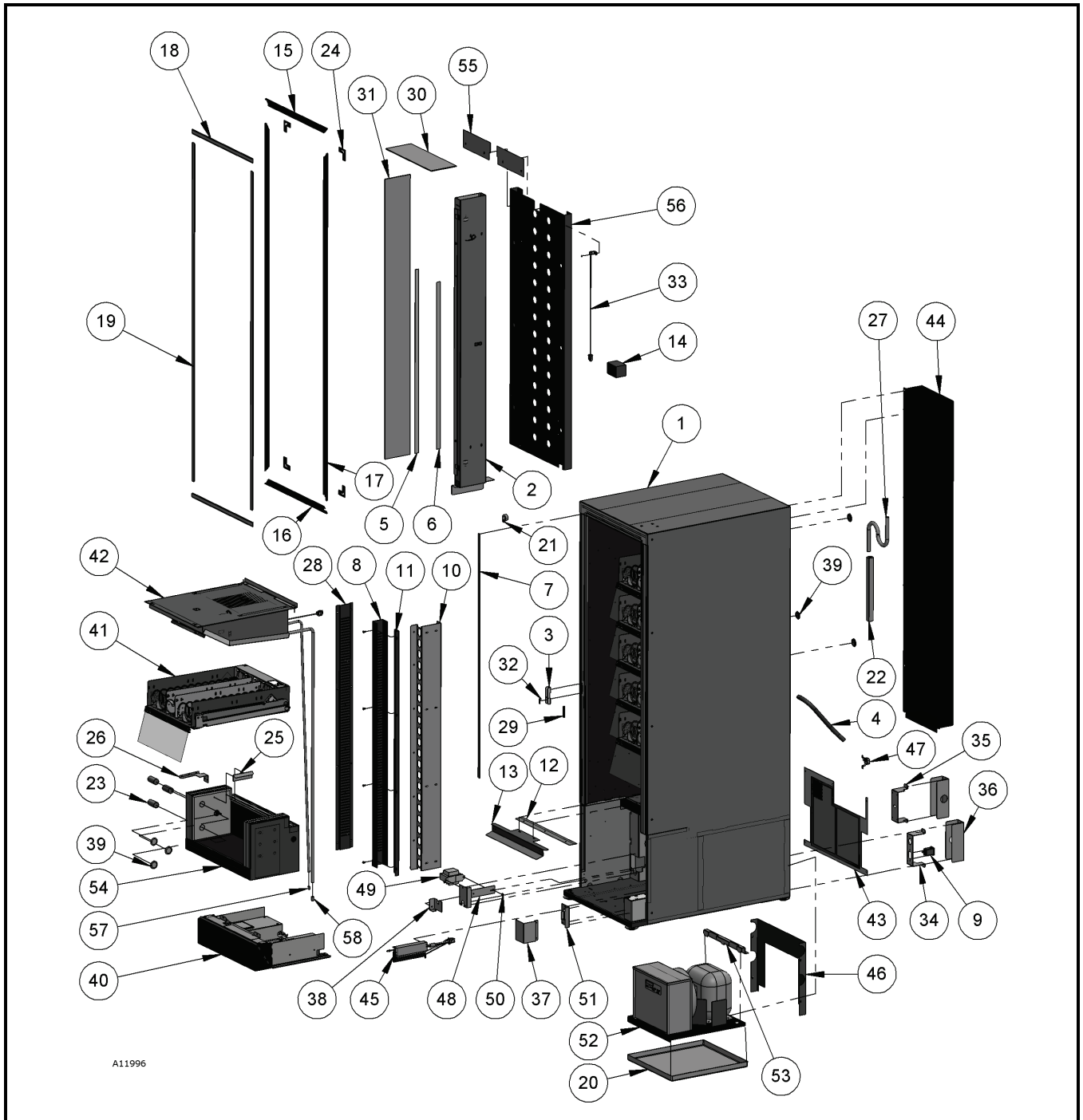
TRANSITION SUB-ASSEMBLY PARTS LIST

ITEM NO.	PART NUMBER	3513	3514	DESCRIPTION
1	4208565	3.6 FT	3.6 FT	DOUBLE SIDED TAPE .750/RE
2	4212374	1	1	TRANSITION PORT
3	4212388.000330	1	1	GASKET PLATE BLACK
4	4212576	1	-	REPL-HE-HEATER WIRE TRANSITION PORT
5	4212650.001	2	2	3/4 X 1.25 EPDM FOAM TAPE
6	4212650.002	2	2	3/4 X 1.25 EPDM FOAM TAPE
7	4212681	3.5 FT	-	FOAM GASKET 1/2 X 1
8	4212776	1	1	TRANSITION GASKET

* SPECIFY COLOR
AR AS REQUIRED

† SPECIFY VOLTAGE/ HEATED/UN-HEATED
†† SPECIFY SOFTWARE VERSION

CABINET ASSEMBLY (FF)



A11996

* SPECIFY COLOR
AR AS REQUIRED

† SPECIFY VOLTAGE/ HEATED/UN-HEATED
‡ SPECIFY SOFTWARE VERSION

CABINET ASSEMBLY PARTS LIST

ITEM NO.	PART NUMBER	3513	DESCRIPTION
1	1215832	1	CABINET FOAM ASSEMBLY/ BLACK
2	1217266	1	LIGHT ASSEMBLY-FF (SEE PAGE # 15)
3	1216163.000330	1	LATCH PIN ASSEMBLY BLACK
4	4025410.500	1	TUBING-MAYON RAW
5	4208565	18FT	DOUBLE SIDED TAPE .750/RE
6	4208565.001	15FT	DOUBLE SIDED TAPE 1.00/RE
7	4209845	7FT	PROTECTIVE WINDOW SEAL 1/2"
8	4212060.000330	1	RAIL SUPPORT RIGHT/BLACK
9	4212490.002	1	RFI FILTER IEC SOCKET 15A
10	4212501.000330	1	HARNESS CHANNEL BLACK
11	4212502.000330	1	RIGHT PANEL BRACKT BLACK
12	4212504	1	SEAL HOLD DOWN
13	4212514.000330	1	DELIVERY BOX COVER-BLACK
14	4212538	1	CABINET SEAL INSULATION
15	4212547	1	EXTRUSION OVERLAY TOP
16	4212547.005	1	EXTRUSION OVERLAY BOTTOM
17	4212547.006	2	EXTRUSION OVERLAY SIDE FF
18	4212548	2	MAGNET TRIM TOP/BOTTOM CF/FF
19	4212548.003	2	MAGNET TRIM SIDES /FF
20	4212608	1	DRAIN PAN
21	4060134	1	PLASTIC WIRE CLAMP 1"
22	4212656	8 FT	5/8ID INSULATION TUBE W/SLIT
23	4212396	7	HINGE HOLE PLUG
24	4212666	4	EXTRUSION CORNER
25	4212689.000330	1	DELIVERY BOX FILLER BLACK
26	4212691.000330	1	LEFT DELIVERY BOX FILLER
27	4212746	1	DRAIN TRAP
28	4212754.000330	1	LEFT RAIL SUPPORT BLACK
29	4212785	14 FT	FOAM TAPE 3/16 X 1/4
30	4212808	1	MIRRORED PLEXIGLASS TOP
31	4212815	1	MIRRORED PLEXIGLASS
32	4212854	1	DOOR LATCH LIFT
33	4214684	1	TEMPERATURE SENSOR-CABINET
34	4215385	1	POWER CORD BRACKET
35	4215385.001	1	USD BRACKET
36	4215396	2	UMBILICAL COVER
37	4215568.000330	1	HINGE RISER COVER
38	4217094	1	AIR BLOCKER BRACKET
39	7250135.002	8	HOLE PLUG, BPF-1"
40	1217125	1	ELECTRICAL PANEL ASSEMBLY 110V/FF (SEE PAGE # 19)

* SPECIFY COLOR
AR AS REQUIRED

† SPECIFY VOLTAGE/ HEATED/UN-HEATED
†† SPECIFY SOFTWARE VERSION

ITEM NO.	PART NUMBER	3513	DESCRIPTION
41	(SEE PAGE # 21)	1	COMMON TRAY ASSEMBLY
42	1217141	1	EVAPORATOR ASSEMBLY 110V (SEE PAGE # 23)
43	1216141.000330	1	REAR SCREEN FAWN BLACK
44	4212245.000330	1	LINE PROTECTOR FAWN BLACK
45	1216399.001	1	TERMINATED BALLAST ASSEMBLY (SEE PAGE # 25)
46	4213174	1	CONDENSOR AIR BLOCK
47	4216109	1	POWER CORD RETAINING CLIP
48	4215614.000330	1	TRANSFORMER MOUNT
49	4206570.000	1	TRANSFORMER, 110V INPUT/24V
50	4214496	1	RUBBER BUMPER
51	4215656.000330	1	CONNECTION COVER
52	1217151	1	COMPLETE REFER FF(USD) (SEE PAGE # 26)
53	4213201	1	BACK REFER BRACKET
54	1216006.400	1	DELIVERY FOAMED BOX ASSEMBLY
55	4213088.000330	2	EVAPORATOR AIR BLOCK
56	4212345.000330	1	COLD AIR DUCT BLACK
57	4213182	1	1/4 COPPER COUPLER
58	4213183	1	3/8 COPPER COUPLER

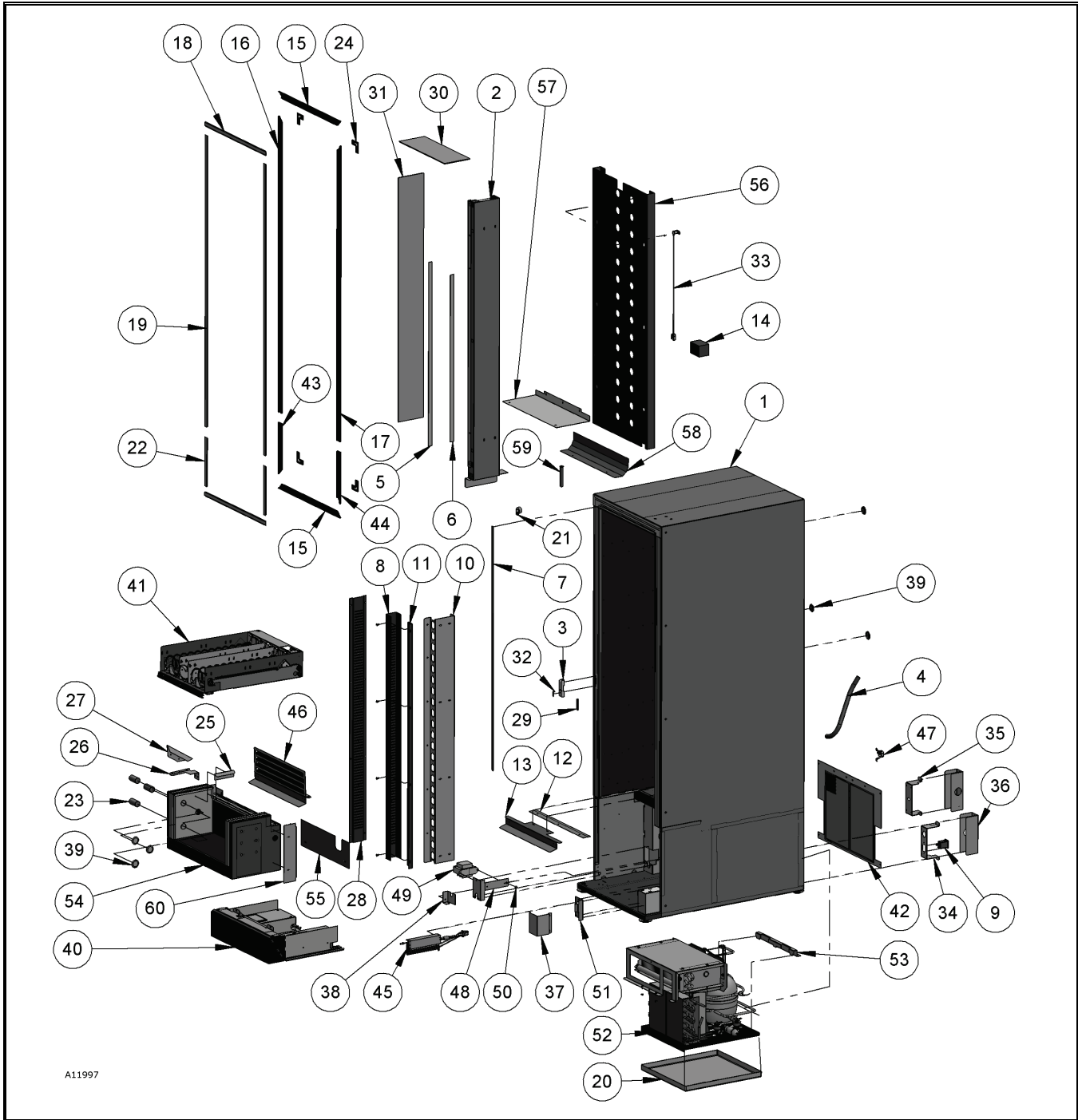
LIST OF PARTS NOT SHOWN

59	4208231.003	1	BOTTLE CORD - 7"
60	4212628	AR	FREON (R404)
61	4219869	1	CENTER SEAL 2 POSITION MATE-N-LOCK
62	4212649	2.7FT	ALUMINIUM TAPE 2" 50YD ROLL
63	4215978	1	MOTOR/ SENSOR/ RELAY HARNESS (FF)
64	4216409	1	AMP 1-480700-0 PLUG-3 PIN
65	4218628	1	ENHANCED CABINET HARNESS (FF)

* SPECIFY COLOR
AR AS REQUIRED

† SPECIFY VOLTAGE/ HEATED/UN-HEATED
‡ SPECIFY SOFTWARE VERSION

CABINET ASSEMBLY (CF)



A11997

* SPECIFY COLOR
AR AS REQUIRED

† SPECIFY VOLTAGE/ HEATED/UN-HEATED
†† SPECIFY SOFTWARE VERSION

CABINET ASSEMBLY PARTS LIST

ITEM NO.	PART NUMBER	3514	DESCRIPTION
1	1215832	1	CABINET FOAM ASSEMBLY/ BLACK
2	1216069	1	LIGHT BOX ASSEMBLY-CF (SEE PAGE # 17)
3	1216163.000330	1	LATCH PIN ASSEMBLY BLACK
4	4025410.500	1	TUBING-MAYON RAW
5	4208565	18FT	DOUBLE SIDED TAPE .750/RE
6	4208565.001	15FT	DOUBLE SIDED TAPE 1.00/RE
7	4209845	7FT	PROTECTIVE WINDOW SEAL 1/2"
8	4212060.000330	1	RAIL SUPPORT RIGHT/BLACK
9	4212490.002	1	RFI FILTER IEC SOCKET 15A
10	4212501.000330	1	HARNESS CHANNEL BLACK
11	4212502.000330	1	RIGHT PANEL BRACKT BLACK
12	4212504	1	SEAL HOLD DOWN
13	4212514	1	DELIVERY BOX COVER-RAW
14	4212538	1	CABINET SEAL INSULATION
15	4212547	2	EXTRUSION OVERLAY TOP /BOTTOM W/O
16	4212547.001	1	EXTRUSION OVERLAY LEFT CF
17	4212547.002	1	EXTRUSION OVERLAY RIGHT CF
18	4212548	2	MAGNET TRIM TOP/BOTTOM CF/FF
19	4212548.001	2	MAGNET TRIM UPPER SIDES /CF
20	4212608	1	DRAIN PAN
21	4060134	1	PLASTIC WIRE CLAMP 1"
22	4212548.002	2	MAGNET TRIM LOWER SIDES /CF
23	4212396	7	HINGE HOLE PLUG
24	4212666	4	EXTRUSION CORNER
25	4212689.000330	1	DELIVERY BOX FILLER BLACK
26	4212691.000330	1	LEFT DELIVERY BOX FILLER
27	4212693.000330	1	LEFT PRODUCT DEFLECTOR
28	4212754.000330	1	LEFT RAIL SUPPORT BLACK
29	4212785	14 FT	FOAM TAPE 3/16 X 1/4
30	4212808	1	MIRRORED PLEXIGLASS TOP
31	4212752	1	MIRRORED PLEXIGLASS CF
32	4212854	1	DOOR LATCH LIFT
33	4214684	1	TEMPERATURE SENSOR-CABINET
34	4215385	1	POWER CORD BRACKET
35	4215385.001	1	USD BRACKET
36	4215396	2	UMBILICAL COVER
37	4215568.000330	1	HINGE RISER COVER
38	4217094	1	AIR BLOCKER BRACKET
39	7250135.002	11	HOLE PLUG, BPF-1"
40	1217125.001	1	ELECTRICAL PANEL ASSEMBLY 110V/CF (SEE PAGE # 19)
41	(SEE PAGE # 21)	1	COMMON TRAY ASSEMBLY
42	1216141.000330	1	REAR SCREEN FAWN BLACK

* SPECIFY COLOR
AR AS REQUIRED

† SPECIFY VOLTAGE/ HEATED/UN-HEATED
‡ SPECIFY SOFTWARE VERSION

ITEM NO.	PART NUMBER	3514	DESCRIPTION
43	4212547.003	1	EXTRUSION OVERLAY LOW LEFT CF
44	4212547.004	1	EXTRUSION OVERLAY LOW RIGHT CF
45	1216399.001	1	TERMINATED BALLAST ASSEMBLY (SEE PAGE # 25)
46	1216166.000330	1	DELIVERY EVAPORATOR COVER BLACK
47	4216109	1	POWER CORD RETAINING CLIP
48	4215614.000330	1	TRANSFORMER MOUNT
49	4206570.000	1	TRANSFORMER, 110V INPUT/24V
50	4214496	1	RUBBER BUMPER
51	4215656.000330	1	CONNECTION COVER
52	1216131	1	REFRIGERATION ASSEMBLY 110V CF (SEE PAGE # 27)
53	4213201	1	BACK REFER BRACKET
54	1216006.400	1	DELIVERY FOAMED BOX ASSEMBLY
55	4212394	1	TOP AIR BLOCK CF
56	4212345.000330	1	COLD AIR DUCT BLACK
57	4212343	1	EVAPORATOR AIR EXTENSION
58	4212372	1	AIR DEFLECTOR CF
59	7100042.000	1	DRAIN TUBE
60	4215946	2	SIDE AIR BLOCK

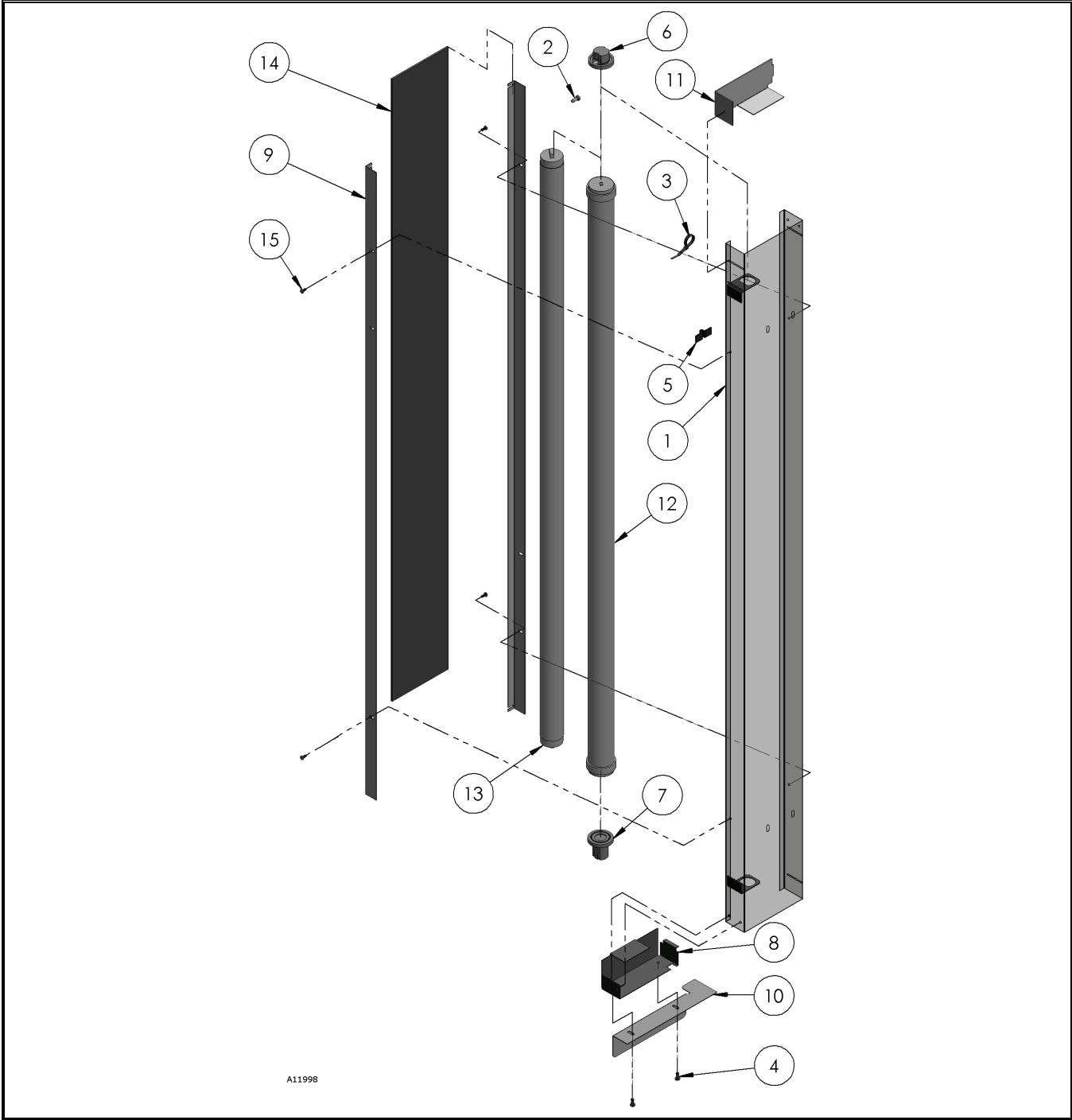
LIST OF PARTS NOT SHOWN

61	4215787	1	MULTI-FUNCTION CABINET HARNESS
62	4215977	1	MOTOR/SENSOR/RELAY HARNESS (CF)
63	4219869	1	CENTER SEAL 2 POSITION MATE-N-LOCK

* SPECIFY COLOR
AR AS REQUIRED

† SPECIFY VOLTAGE/ HEATED/UN-HEATED
†† SPECIFY SOFTWARE VERSION

LIGHT ASSEMBLY (FF)



A11998

* SPECIFY COLOR
AR AS REQUIRED

† SPECIFY VOLTAGE/ HEATED/UN-HEATED
‡ SPECIFY SOFTWARE VERSION

LIGHT ASSEMBLY FF PART LIST

ITEM NO.	PART NUMBER	3513	DESCRIPTION
1	1216169.000306	1	LIGHT BOX WELD WHITE
2	4033505	4	CLOSED END SPLICE CAP #6
3	4033712	3	CABLE TIE 7 3/8"
4	4050240	2	8-32X3/8 PHIL PH MS
5	4060130	5	PRESS CLIP-1/4"
6	4210107.001	1	LAMP HOLDER, TOP, SUBZERO
7	4210107.002	1	LAMP HOLDER, BOT, SUBZERO
8	4212382.000306	1	HARNESS COVER WHITE
9	4212687.000306	2	DIFFUSER RETAINER WHITE
10	4212692.000330	1	BOTTOM LIGHT FILLER BLACK
11	4212817.000306	1	TOP LIGHT COVER
12	4205993.003	1	SAFETY SHIELD W/E.CAPS 45 3/1
13	4209917	1	FLUORESCENT LAMP F48T12
14	4212381	1	LIGHT DIFFUSER
15	4050180	50	8-18X1/2 PHIL PH TEK

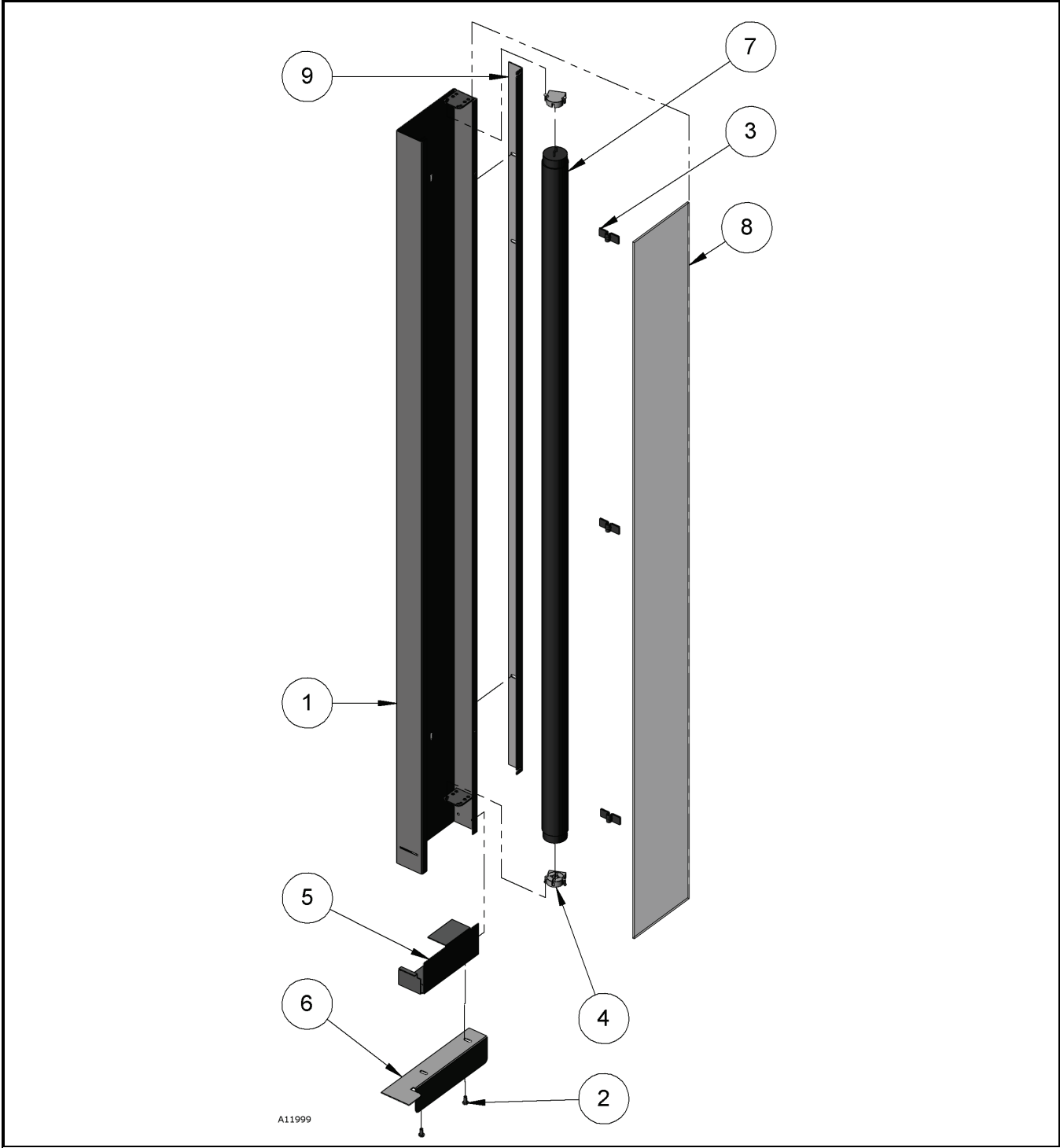
LIST OF PARTS NOT SHOWN

16	4211317	1	REPLACEMENT-HA-LAMP HARNESS
----	---------	---	-----------------------------

* SPECIFY COLOR
AR AS REQUIRED

† SPECIFY VOLTAGE/ HEATED/UN-HEATED
†† SPECIFY SOFTWARE VERSION

LIGHT BOX ASSEMBLY (CF)



* SPECIFY COLOR
AR AS REQUIRED

† SPECIFY VOLTAGE/ HEATED/UN-HEATED
‡ SPECIFY SOFTWARE VERSION

LIGHT BOX ASSEMBLY CF PARTS LIST

ITEM NO.	PART NUMBER	3514	DESCRIPTION
1	1216068.000306	1	LIGHT BOX WELD/CF/WHITE
2	4050240	2	8-32X3/8 PHIL PH MS
3	4060130	5	PRESS CLIP-1/4"
4	4207171	2	LAMP SOCKET
5	4212382.000306	1	HARNESS COVER WHITE
6	4212692.000330	1	BOTTOM LIGHT FILLER BLACK
7	8345956	1	F40/D41 LAMP, FLUORESCENT
8	4212381	1	LIGHT DIFFUSER
9	4212687.000306	1	DIFFUSER RETAINER WHITE

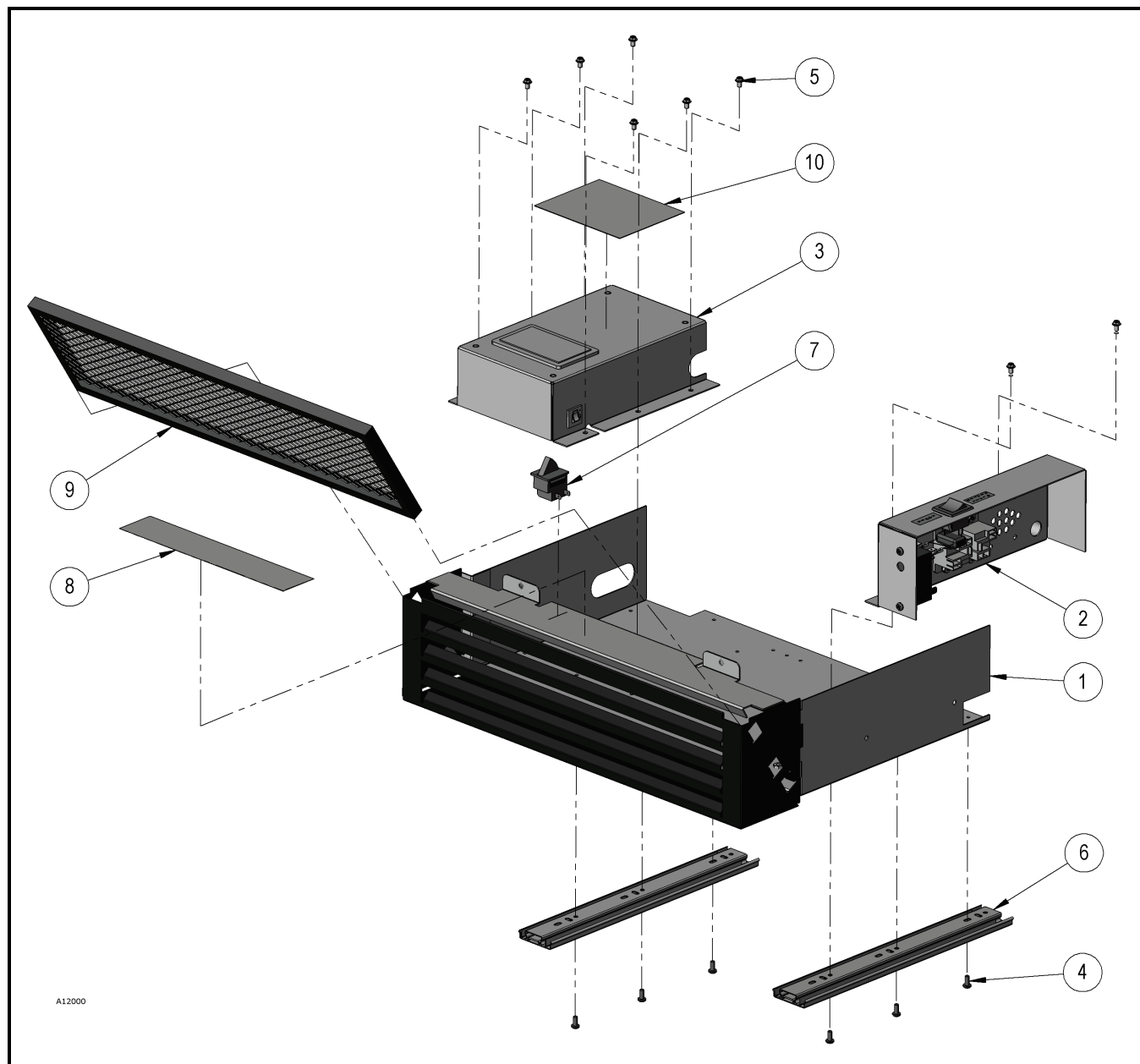
LIST OF PARTS NOT SHOWN

10	4211317	1	REPLACEMENT-HA-LAMP HARNESS
----	---------	---	-----------------------------

* SPECIFY COLOR
AR AS REQUIRED

† SPECIFY VOLTAGE/ HEATED/UN-HEATED
†† SPECIFY SOFTWARE VERSION

ELECTRICAL PANEL ASSEMBLY



A12000

ELECTRICAL PANEL ASSEMBLY PART LIST

ITEM NO.	PART NUMBER	3513	3514	DESCRIPTION
1	1217124.001330	1	1	ELECTRICAL PANEL WELD/CF/FF
2	1217134	1	-	POWER BOX ASSEMBLY FF(USD)
	1217134.001	-	1	POWER BOX ASSEMBLY CF(USD)
3	1217135	1	1	CONTROLLER BOX ASSEMBLY
4	4050240	6	6	8-32X3/8 PHIL PH MS
5	4050420	17	17	8-18X1/4 PHIL
6	4214745	2	2	DRAWER SLIDE

* SPECIFY COLOR
AR AS REQUIRED

† SPECIFY VOLTAGE/ HEATED/UN-HEATED
‡ SPECIFY SOFTWARE VERSION

ITEM NO.	PART NUMBER	3513	3514	DESCRIPTION
7	4212621	1	1	SWITCH
8	4212677	1	1	DUST FILTER LABEL
9	4212630.001	1	1	AIR FILTER 5.25
10	4215596	1	-	USD BOARD COVER LABEL/FF
	4215596.001	-	1	USD BOARD COVER LABEL/CF

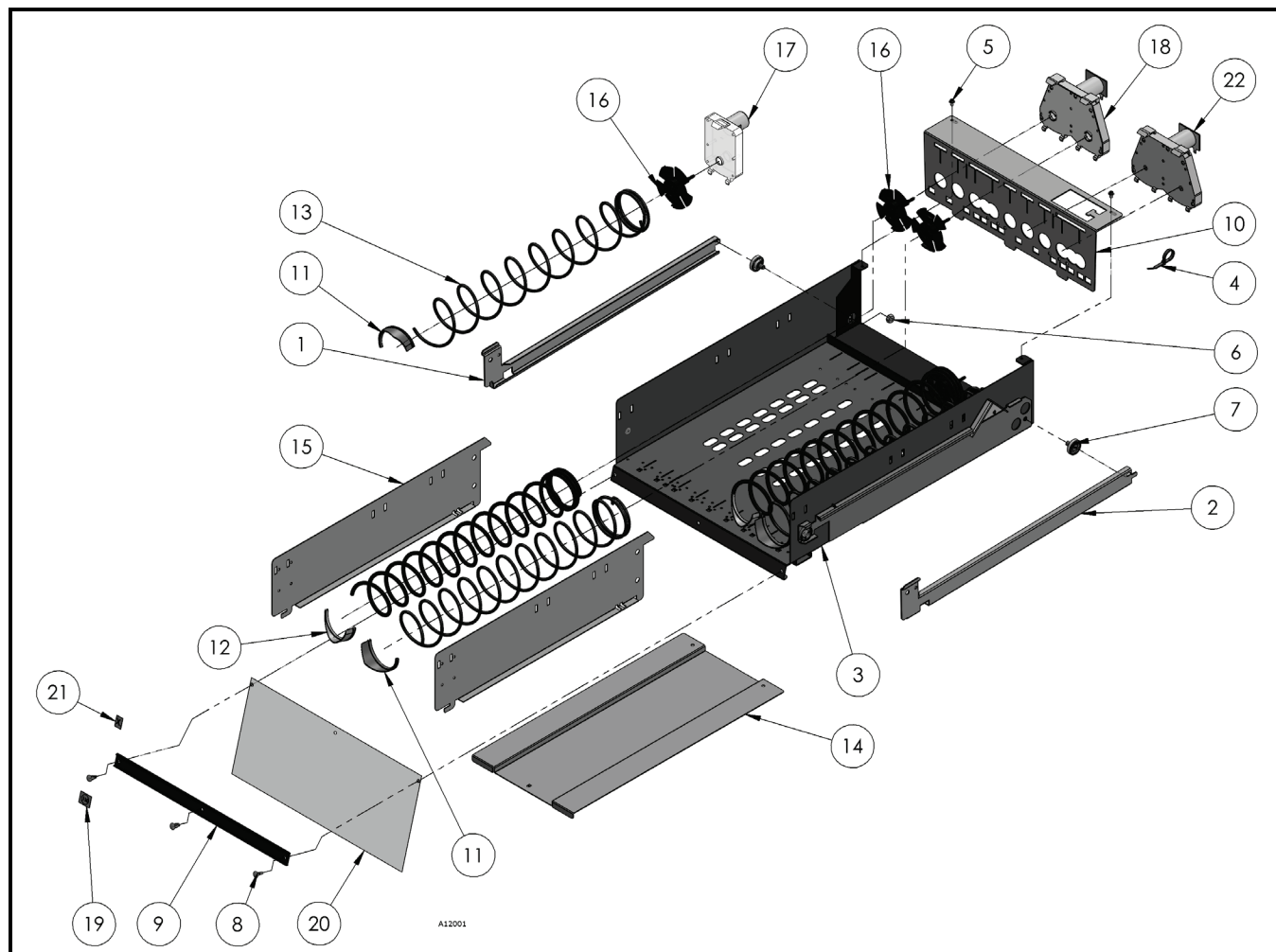
LIST OF PARTS NOT SHOWN

11	4215373.001	1	1	DOOR SWITCH HARNESS 14"
12	4215908	1	1	SECONDARY POWER/MDB CABLE

* SPECIFY COLOR
AR AS REQUIRED

† SPECIFY VOLTAGE/ HEATED/UN-HEATED
†† SPECIFY SOFTWARE VERSION

COMMON TRAY ASSEMBLY



COMMON TRAY ASSEMBLY 110V PARTS LIST

ITEM NO.	PART NUMBER	3513	3514	DESCRIPTION
1	1200321.006	AR	AR	SIDE RAIL RIVET ASSEMBLY-LEFT
2	1200321.007	AR	AR	SIDE RAIL RIVET ASSEMBLY-RIGHT
3	1217350.000330	AR	AR	TRAY WELD/MZF/FAWN BLACK
4	4033712	AR	AR	CABLE TIE 7 3/8"
5	4050420	AR	AR	8-18X1/4 PHIL HWH TYP- B
6	4050496	AR	AR	1/4-20 NUT, TWO WAY LOCK
7	4060670.001	AR	AR	ROLLER
8	4205329	AR	AR	ARROW CLIP
9	4207945.001	AR	AR	LABEL HOLDER CF BLACK
10	4212580.000330	AR	AR	MOTOR BACK CF-BLACK
11	4025748	AR	AR	PRODUCT EJEC-CCW-BLACK
12	4025748.002	AR	AR	PRODUCT EJEC-CW-BLACK
13	SEE PAGE # 34	AR	AR	SPIRAL
14	4207903.000330	-	AR	DUAL HELIX RETAINER BLACK

* SPECIFY COLOR
AR AS REQUIRED

† SPECIFY VOLTAGE/ HEATED/UN-HEATED
‡ SPECIFY SOFTWARE VERSION

ITEM NO.	PART NUMBER	3513	3514	DESCRIPTION
15	4209261.002330	AR	AR	TRAY DIVIDER/BLACK/GVN CF/F
16	4209502	AR	AR	AUGER COUPLING GRAY
17	4214965	-	AR	MOTOR SPLINE SNAP-IN
	4214967	AR	-	MOTOR SPLINE /FF
18	4214966	-	AR	DUAL MOTOR SPLINE SNAP-IN
19	4216648	AR	AR	SELECTION LABEL
20	4212586	AR	-	TRAY PRODUCT DEFLECTOR
	4200052	AR	AR	PRICE LABEL .10-1.50
	4203793.001	AR	AR	DOLLAR LABEL-\$1
	4203793.002	AR	AR	DOLLAR LABEL-\$2
	4203793.003	AR	AR	DOLLAR LABEL-\$3
21	4203793.004	AR	AR	DOLLAR LABEL-\$4
	4203793.005	AR	AR	DOLLAR LABEL-\$5
22	4210392.002	AR	-	DUAL MOTOR SPLINE SNAP-IN (LOW TEMPERATURE)

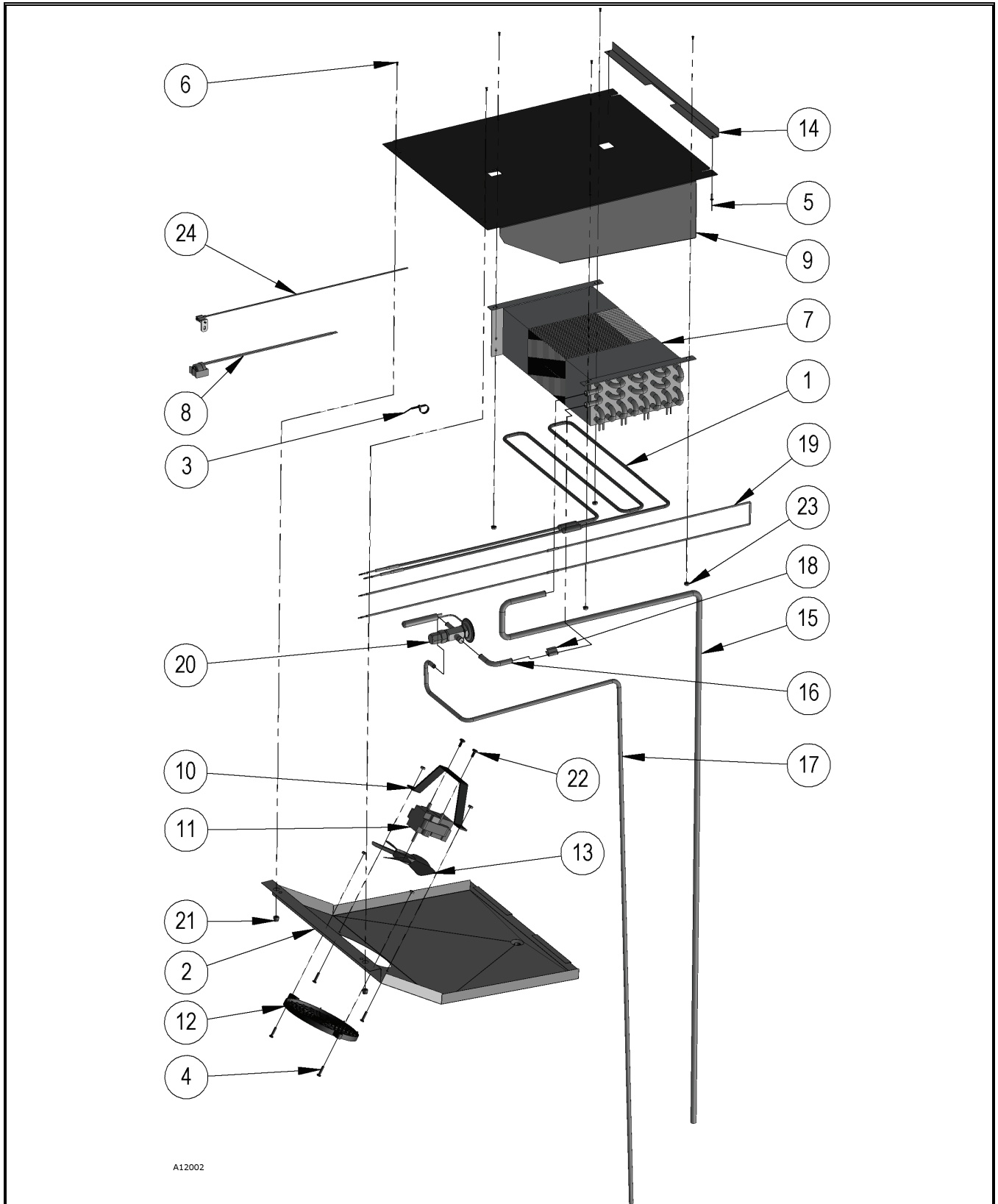
LIST OF PARTS NOT SHOWN

23	4215678	AR	AR	TRAY HARNESS CF/FF
----	---------	----	----	--------------------

* SPECIFY COLOR
AR AS REQUIRED

† SPECIFY VOLTAGE/ HEATED/UN-HEATED
†† SPECIFY SOFTWARE VERSION

EVAPORATOR ASSEMBLY 110V (FF)



A12002

* SPECIFY COLOR
AR AS REQUIRED

† SPECIFY VOLTAGE/ HEATED/UN-HEATED
‡ SPECIFY SOFTWARE VERSION

EVAPORATOR ASSEMBLY PARTS LIST

ITEM NO.	PART NUMBER	3513	DESCRIPTION
1	1216448	1	REPL-HE-EVAPORATOR HEATER TERMINATION
2	1216492	1	EVAPORATOR COVER WELD
3	4033712	2	CABLE TIE 7 3/8"
4	4050262	4	8-32X3/4 PHIL PH MS
5	4050667.001	2	1/8X .125 POP RIVET
6	4203386.043	6	8-32X1/2 CAPT. STUD
7	4213036	1	EVAPORATOR
8	4213038	1	THERMOCOUPLE
9	4213086	1	EVAPORATOR MOUNT
10	4213117	1	FAN BRACKET
11	4213118	1	MOTOR FAN
12	4213119	1	FAN GUARD
13	4213120	1	FAN 6 INCH
14	4213377	1	COVER HANGER BRACKET
15	4213378	1	3/8 EVAPORATOR OUTLET TUBING
16	4213381	1	TUBE EVAPORATOR /EXPANSION VALVE
17	4213382	1	TUBE EXPANSION VALVE 1/4
18	4214683	1	TEMPERATURE SENSOR REFRIGERATION LINE CLIP
19	1216449	1	REPL-HE-HEATER WIRE TERM
20	4217023	1	EXPANSION VALVE
21	8330164	2	8-32 THUMB NUT-BRASS
22	8800406	2	10-32X1/2 PHIL TH W/E
23	8800956	8	8-32 HEX NUT W/ETW
24	4214684	1	TEMPRETURE SENSOR - CABINET

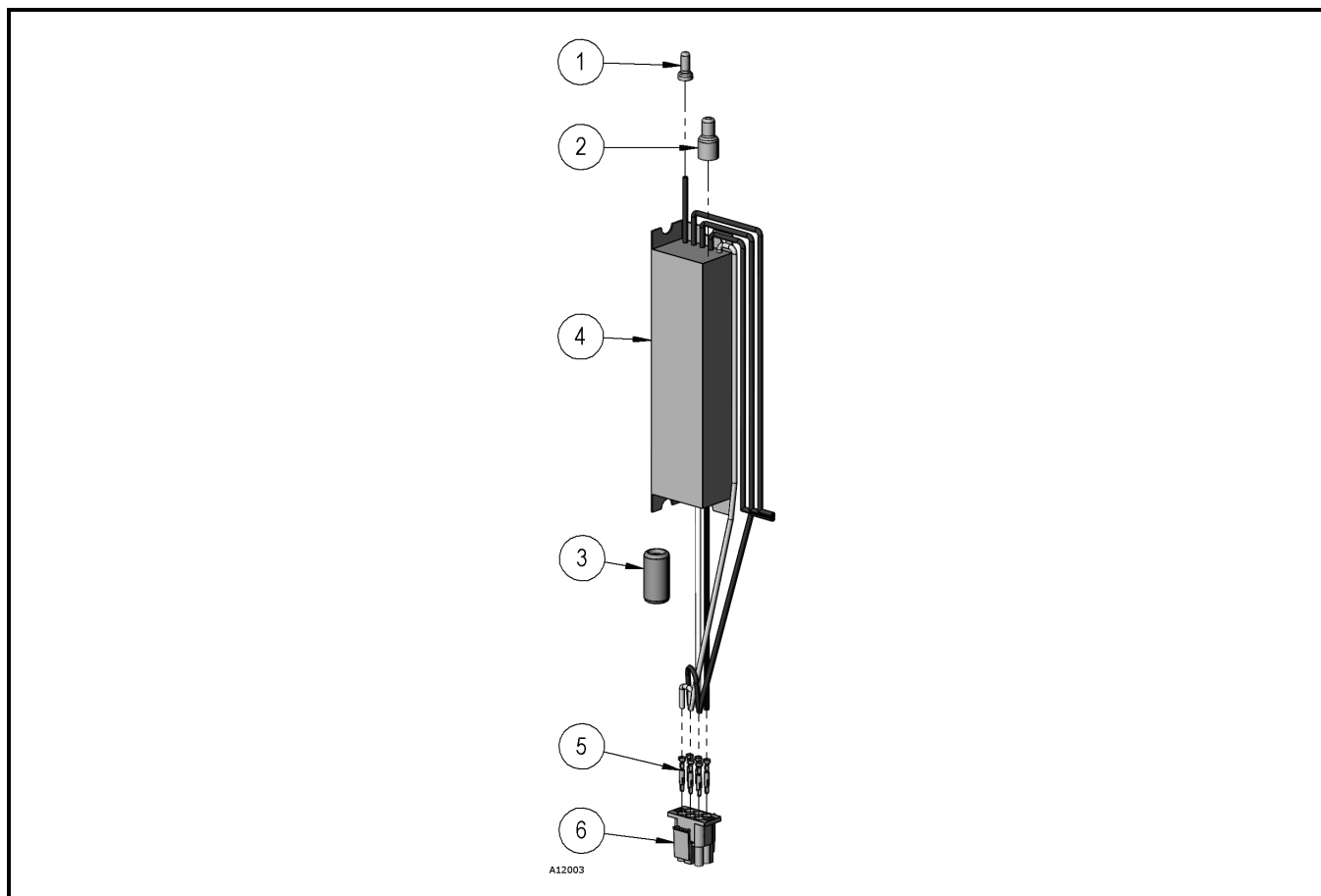
LIST OF PARTS NOT SHOWN

25	4201709	1	SOLDER-SAFE SIL 15%
26	4215986	1	EVAPORATOR/CABINET HARNESS
27	4218268	0.33 FT	CORK TAPE
28	4219869	1	CENTER SEAL 2 POSITION MATE-N-LOCK

* SPECIFY COLOR
AR AS REQUIRED

† SPECIFY VOLTAGE/ HEATED/UN-HEATED
†† SPECIFY SOFTWARE VERSION

TERMINATED BALLAST ASSEMBLY



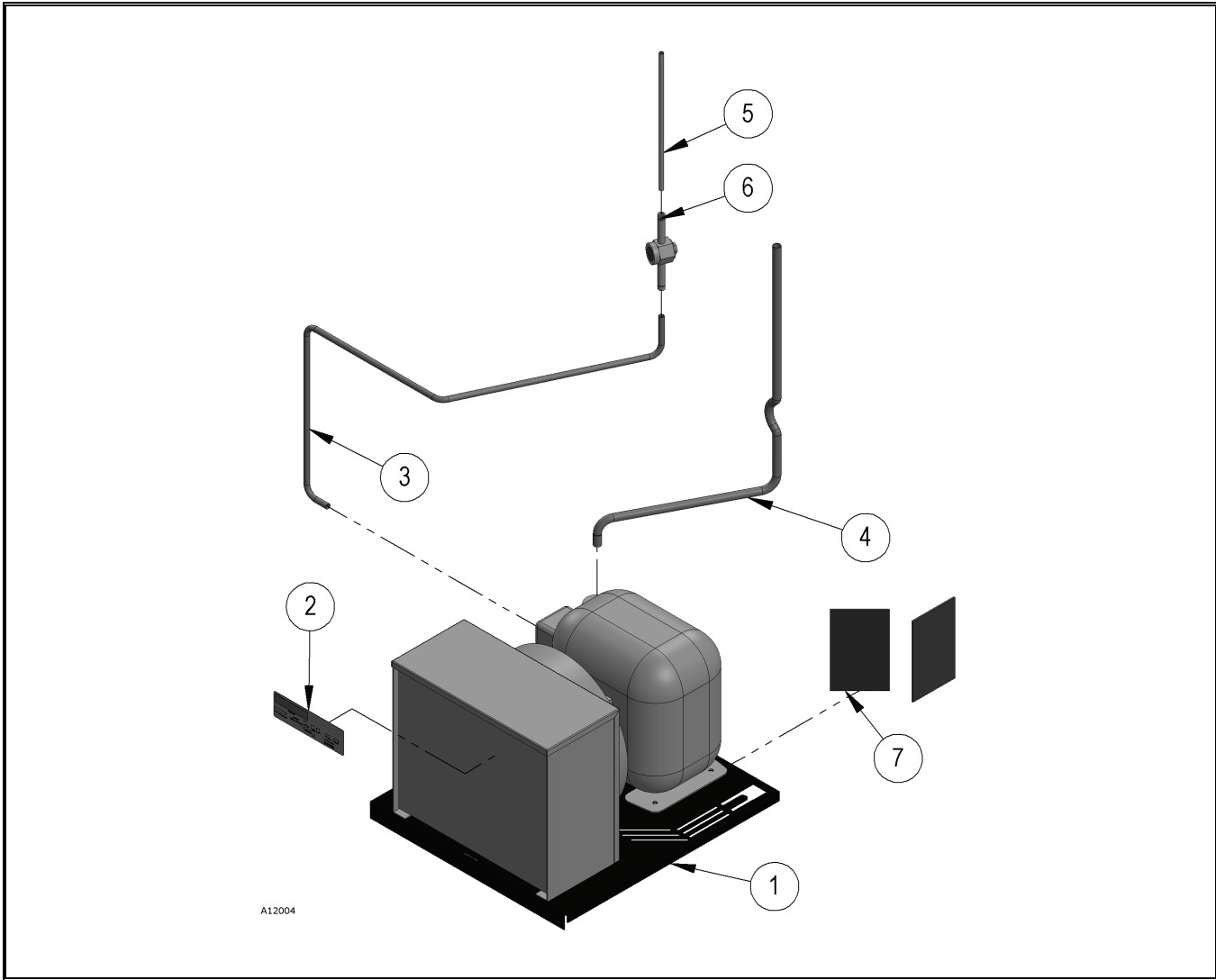
TERMINATED BALLAST ASSEMBLY PARTS LIST

ITEM NO.	PART NUMBER	3513	3514	DESCRIPTION
1	4033505	1	1	CLOSED END SPLICE CAP #6
2	4033693	1	1	CLOSED END SPLICE CAP #13
3	4202801.001	1	1	SHIELD BEAD-FERRITE
4	4213320	1	1	BALLAST WH33/L 120V
5	4217433	6	6	AMP PIN 350705-1
6	4217436	1	1	AMP 6-PIN CONNECTOR

* SPECIFY COLOR
AR AS REQUIRED

† SPECIFY VOLTAGE/ HEATED/UN-HEATED
‡ SPECIFY SOFTWARE VERSION

COMPLETE REFRIGERATION ASSEMBLY (FF)



COMPLETE REFRIGERATION ASSEMBLY PARTS LIST

ITEM NO.	PART NUMBER	3513	DESCRIPTION
1	1216320.001	1	REFER BASE ASSY FF 115V
2	4205507.409	1	REFER LABEL-USD FF 110V
3	4212101	1	TUBE RECIEVER/SIGHT GLASS
4	4212102	1	COMP/EVAP LINE
5	4212939	1	TUBE SIGHT TO EVAP GLASS
6	4213044	1	SIGHT GLASS REFER WINDOW
7	4212661	6	CONDENSATE EVAPORATE CARD

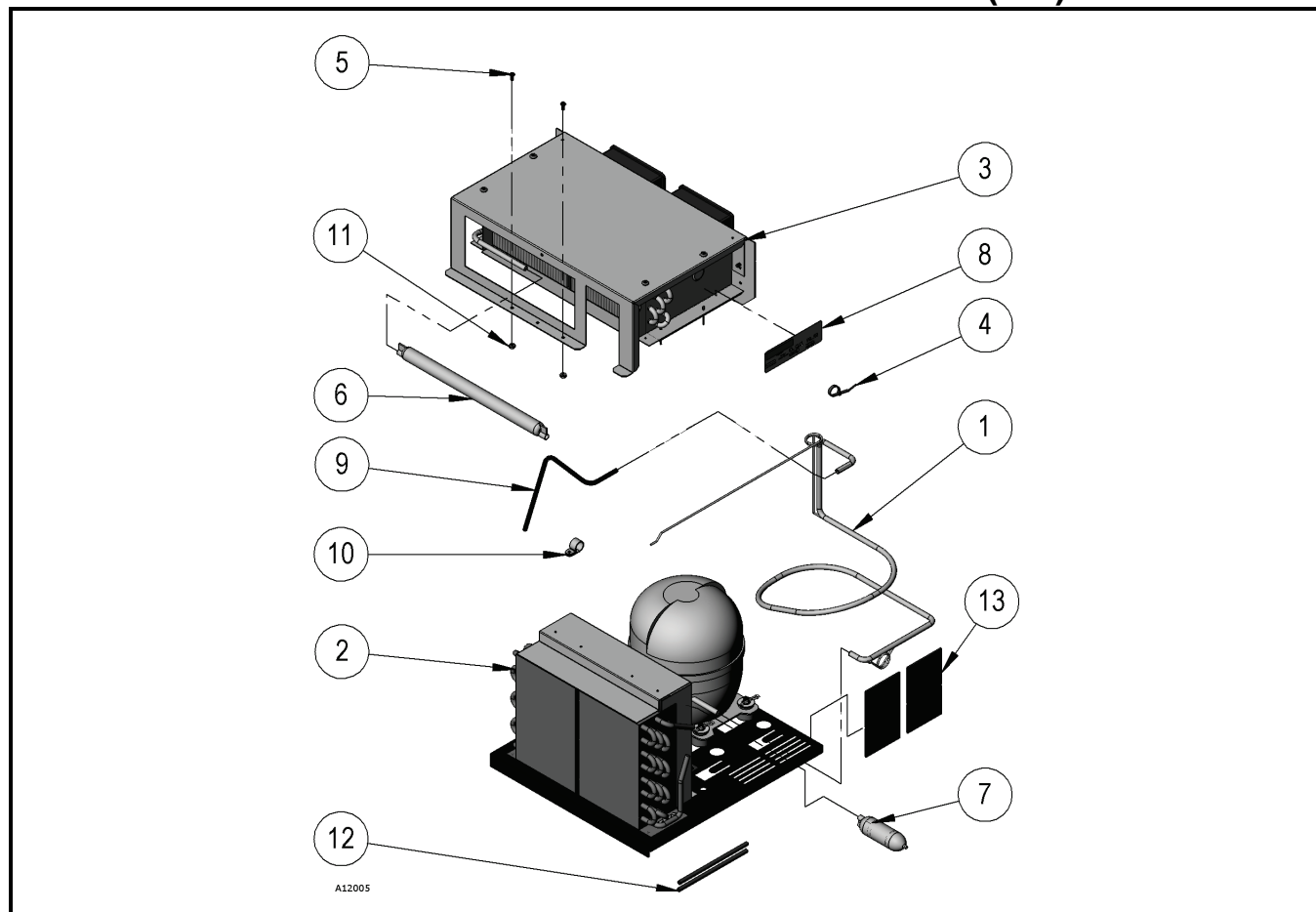
LIST OF PARTS NOT SHOWN

8	4215784	1	COMPRESSOR HARNESS
---	---------	---	--------------------

* SPECIFY COLOR
AR AS REQUIRED

† SPECIFY VOLTAGE/ HEATED/UN-HEATED
†† SPECIFY SOFTWARE VERSION

REFRIGERATION ASSEMBLY 110V (CF)



REFRIGERATION ASSEMBLY PARTS LIST

ITEM NO.	PART NUMBER	3514	DESCRIPTION
1	1214434	1	SUCTION LINE ASSEMBLY
2	1216132	1	CONDENSOR ASSEMBLY (SEE PAGE # 29)
3	1216133	1	EVAPORATOR ASSEMBLY 115V (SEE PAGE # 30)
4	4033712	2	CABLE TIE 7 3/8"
5	4050239	2	8-32X3/8 PHL PH TYP-T
6	4060480.002	1	ACCUMULATOR
7	4205468	1	DRIER-BONDED CORE.108
8	4205507.513	1	REFER LABEL-CF 110V
9	4208531	1	DISCHARGE LINE
10	8324099.7	2	CLAMP - 1/2 X 5/8
11	8800956	2	8-32 HEX NUT W/ETW
12	8801180.003	2	1/4 CU TUBING X 6"
13	4212661	6	CONDENSATE EVAPORATE CARD
LIST OF PARTS NOT SHOWN			
14	4201709	0.5 OZ	SOLDER-SAFE SIL 15%

* SPECIFY COLOR
AR AS REQUIRED

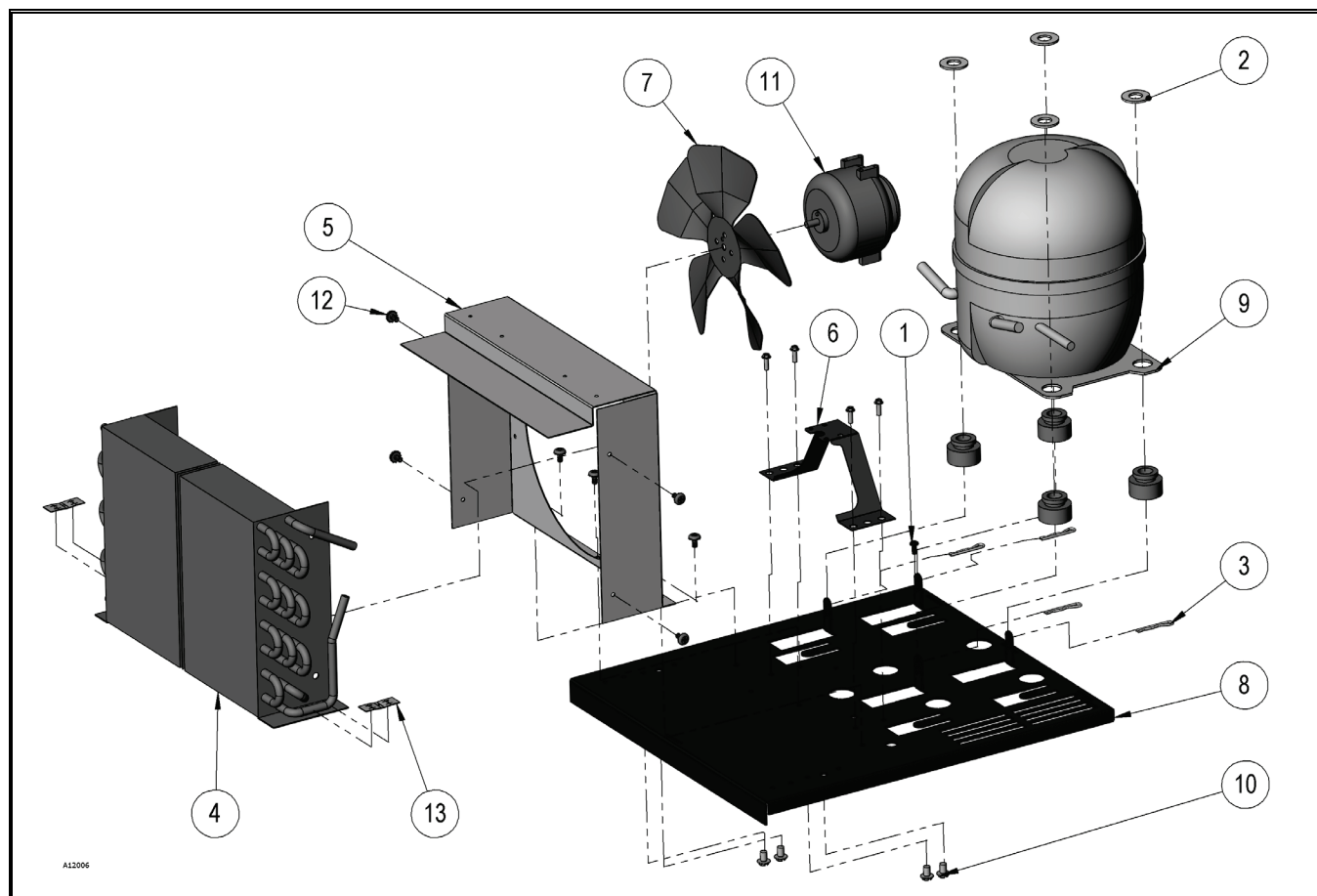
† SPECIFY VOLTAGE/ HEATED/UN-HEATED
‡ SPECIFY SOFTWARE VERSION

ITEM NO.	PART NUMBER	3514	DESCRIPTION
15	4205470	AR	R-134A REFRIGERANT
16	4212579	1	REPLACEMENT-HA-COMPRESSOR HARNESS
17	4215283	3	TERMINAL 1/4 IN PK100
18	8365271.500	AR	INSULATION-FT

* SPECIFY COLOR
AR AS REQUIRED

† SPECIFY VOLTAGE/ HEATED/UN-HEATED
†† SPECIFY SOFTWARE VERSION

CONDENSER ASSEMBLY (CF)



CONDENSER ASSEMBLY PARTS LIST

ITEM NO.	PART NUMBER	3514	DESCRIPTION
1	4050239	1	8-32X3/8 PHL PH TYP-T
2	4050608	4	1/2 FLAT WASHER-ZINC
3	4050773.001	4	#17 HITCH PIN "CLOSED"
4	4203686	1	CONDENSER COIL
5	4208275	1	FAN SHROUD
6	4208445.001	1	CONDENSER FAN BRACKET
7	4208446	1	FAN BLADE 8.25X30D
8	4212100	1	REFRIGERATION BASE
9	4212283	1	COMPRESSOR/ 110V-1/3HP
10	7332393.000	4	1/4-20X3/8 SLOTTED HH MS
11	7332418.000	1	MOTOR-5 W CONDENSER FAN
12	8801204	11	10-16X3/8 PHIL TH W/E TYP
13	8916923	2	1/4-20 TWIN SPRING NUT

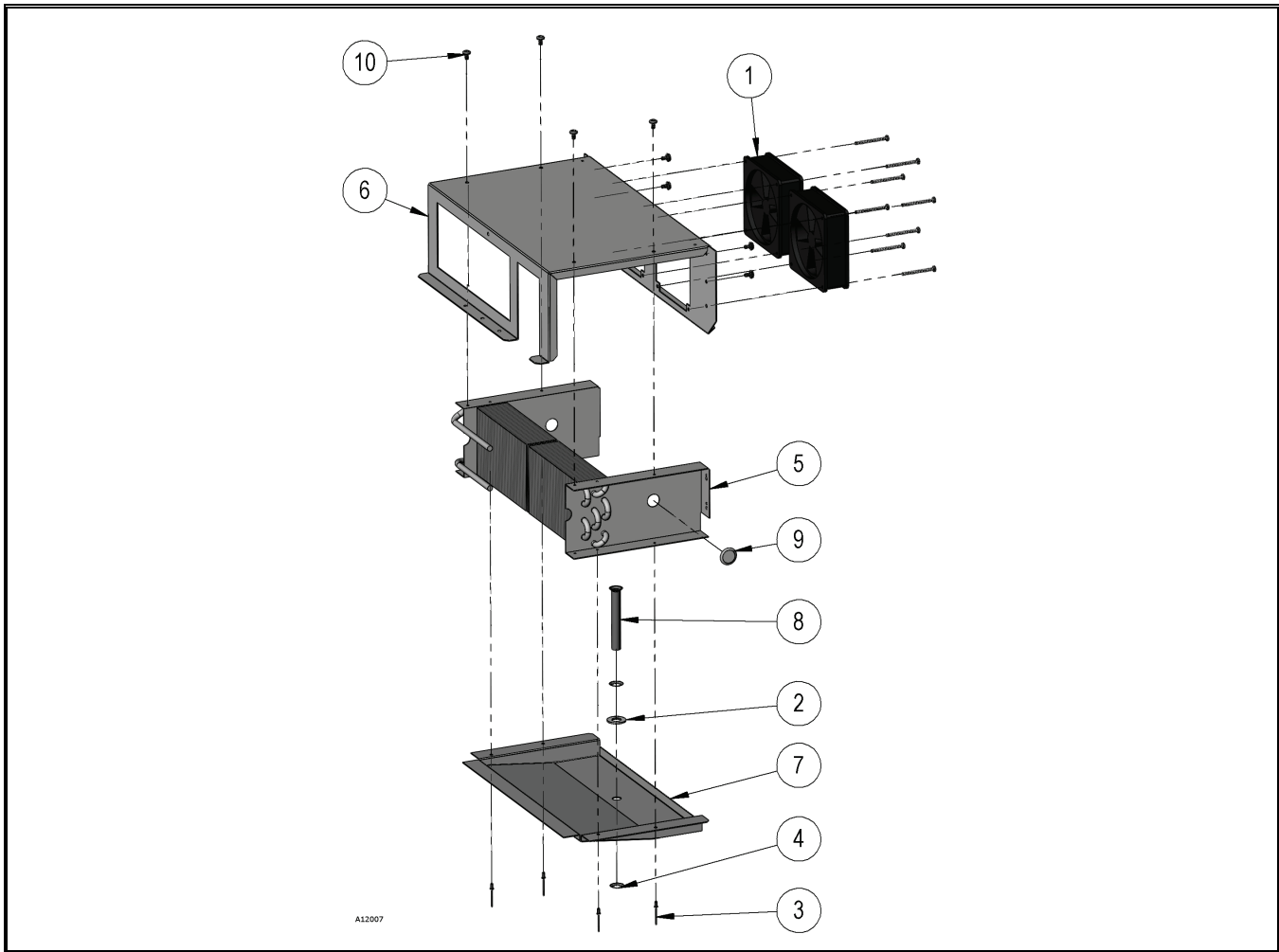
LIST OF PARTS NOT SHOWN

14	4212286	1	STARTING CAPACITOR/110V
----	---------	---	-------------------------

* SPECIFY COLOR
AR AS REQUIRED

† SPECIFY VOLTAGE/ HEATED/UN-HEATED
‡ SPECIFY SOFTWARE VERSION

EVAPORATOR ASSEMBLY 115V (CF)



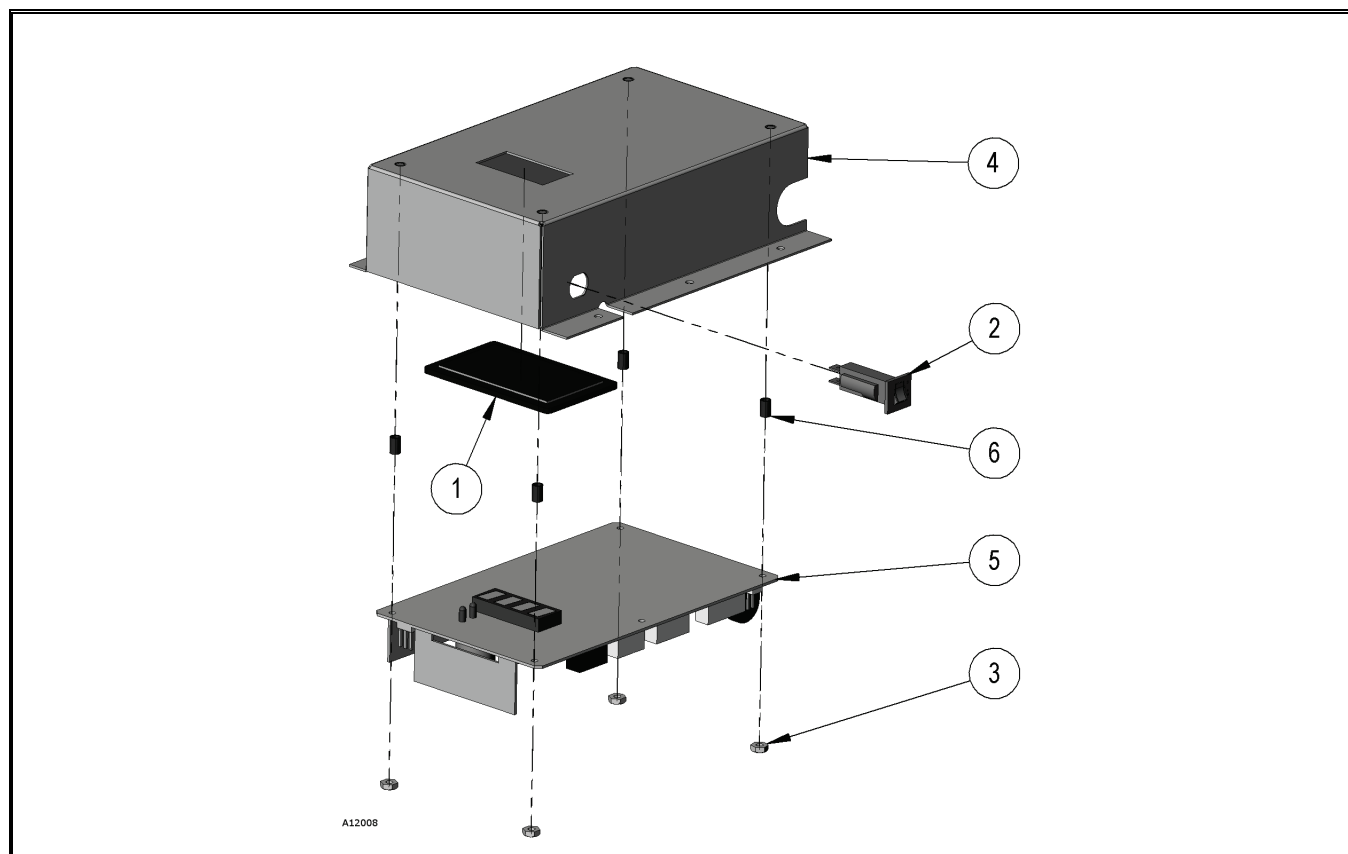
EVAPORATOR ASSEMBLY 115V PARTS LIST

ITEM NO.	PART NUMBER	3514	DESCRIPTION
1	4034344.000	2	EVAPORATOR FAN (115V)
2	4050608	1	1/2 FLAT WASHER-ZINC
3	4050663	4	1/8 X 1/4 RIVET
4	4202284	2	Ø0.500 STUD PUSH NUT
5	4206047.001	1	EVAPORATOR
6	4212342	1	EVAPORATOR MOUNT
7	4212344	1	DRAIN PAN
8	7100042.000	1	DRAIN TUBE
9	7250135.003	1	HOLE PLUG, BPF-3/4"
10	8801204	8	10-16X3/8 PHIL TH W/E TYP

* SPECIFY COLOR
AR AS REQUIRED

† SPECIFY VOLTAGE/ HEATED/UN-HEATED
†† SPECIFY SOFTWARE VERSION

CONTROLLER BOX ASSEMBLY



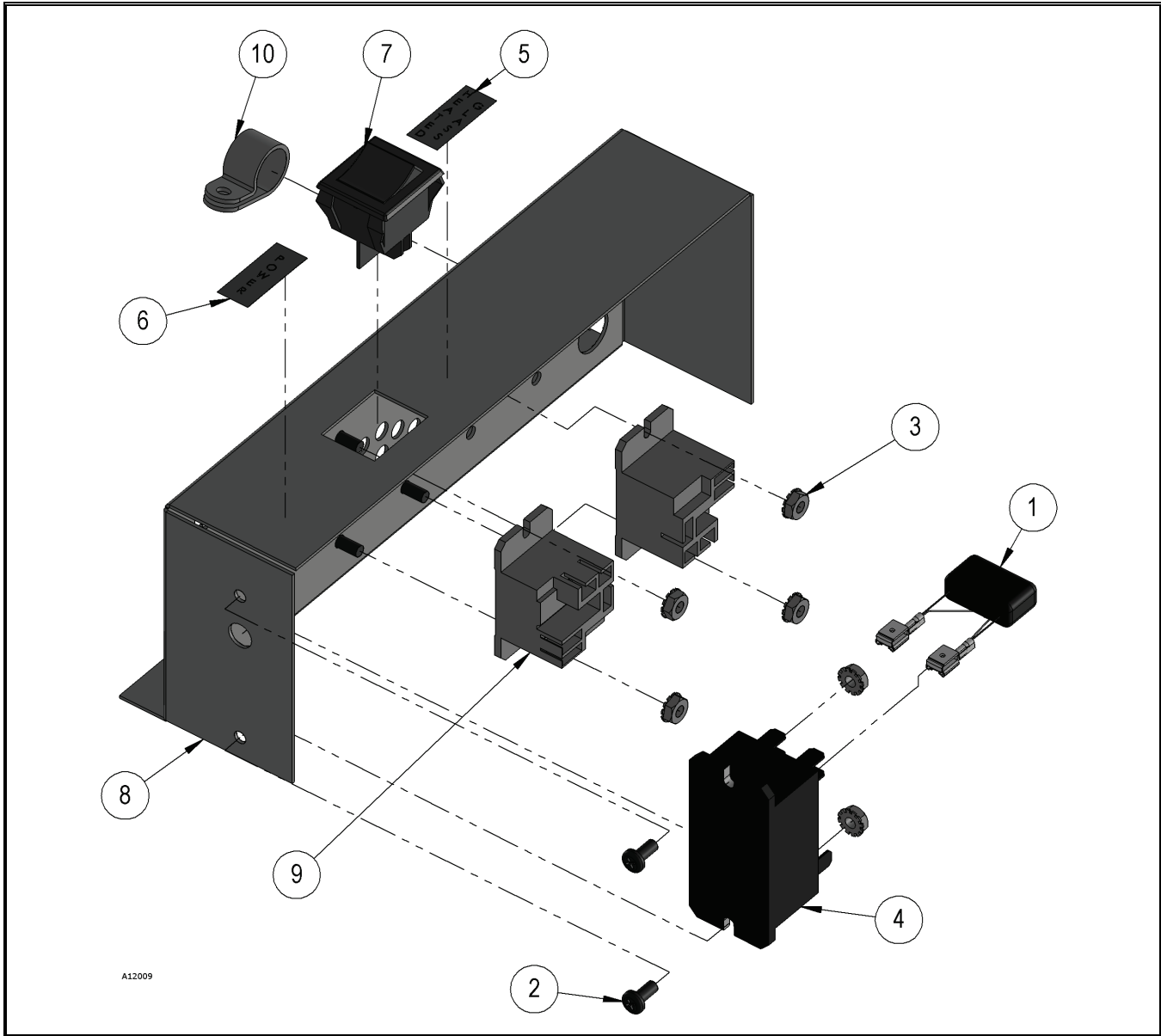
CONTROLLER BOX ASSEMBLY PARTS LIST

ITEM NO.	PART NUMBER	3513	3514	DESCRIPTION
1	4202841.009	1	1	READOUT WINDOW/BLUE
2	4203467.003	1	1	3 AMP CIRCUIT BREAKER
3	4209866	4	4	6-32 NYLON NUT
4	4215016.001330	1	1	BOARD COVER STAKE
5	4215386.002	1	1	GVC-USD CONTROL BOARD 2-WIRE/3-W
6	4216687.375	4	4	TUBULAR SPACER 3/8"

* SPECIFY COLOR
AR AS REQUIRED

† SPECIFY VOLTAGE/ HEATED/UN-HEATED
‡ SPECIFY SOFTWARE VERSION

POWER BOX ASSEMBLY



POWER BOX ASSEMBLY PART LIST

ITEM NO.	PART NUMBER	3513	3514	DESCRIPTION
1	1216357	1	1	ARC SUPPRESSOR SNUBBER 110V
2	4050240	8	4	8-32X3/8 PHIL PH MS
3	8800956	8	4	8-32 HEX NUT W/ETW
4	4206643	1	1	RELAY DPST 24VAC/DC30A
5	4212526	1	-	HEATED GLASS LABEL
6	4212527	1	1	POWER LABEL
7	4213627	1	1	SWITCH-DOUBLE POLE

* SPECIFY COLOR
AR AS REQUIRED

† SPECIFY VOLTAGE/ HEATED/UN-HEATED
†† SPECIFY SOFTWARE VERSION

ITEM NO.	PART NUMBER	3513	3514	DESCRIPTION
8	4215240.000330	1	1	SWITCH/RELAY PANEL
9	4216013	2	-	MINI-RELAY,SPST,24VDC
10	8324099.7	1	1	CLAMP - 1/2 X 5/8

LIST OF PARTS NOT SHOWN

11	4215652	1	-	RELAY BOX HARNESS B (24V)
12	4215890	1	1	RELAY HARNESS "A" (24V)
13	4218629	1	-	FF RALAY HARNESS
14	4215885	-	1	CF RELAY HARNESS(110V)

* SPECIFY COLOR
AR AS REQUIRED

† SPECIFY VOLTAGE/ HEATED/UN-HEATED
‡ SPECIFY SOFTWARE VERSION

OPTIONAL SPIRALS

SINGLE SPIRAL - CCW PART NUMBER	DUAL SPIRAL - CW PART NUMBER	SPIRAL SIZE	SPIRAL COUNT	ESTIMATED PRODUCT SIZE INCHES (MM)
4200272.100309	4205532.100309	Candy	15	1.22 (31)
4200272.101309	4205532.101309	Candy	18	1.00 (25)
4200272.102309	4205532.102309	Candy	24	0.71 (18)
4200272.103309	4205532.103309	Candy	30	0.51 (13)
4200272.104309	4205532.104309	Candy	12	1.55 (39)
4200272.105309	4205532.105309	Candy	9	2.10 (53)
4200272.106309	4205532.106309	Candy	6	3.16 (80)
4200272.107309		Snack	10	1.89 (48)
4200272.108309		Snack	12	1.55 (39)
4200272.109309		Snack	15	1.22 (31)
4200272.110309		Snack	7	2.71 (69)
4200272.111309		Snack	8	2.37 (60)
4200272.131309	4205532.131309	Candy	10	1.89 (48)
4200272.132309	4205532.132309	Candy	11	1.72 (44)
4200272.133309		Snack	30	0.51 (13)
4200272.134309	4205532.134309	Snack	18	1.00 (25)
4200272.137309		Snack	11	1.72 (44)
4200272.138309		Snack	6	3.16 (80)
4200272.139309		Snack	5	3.50 (89)
4200272.140309		Snack	12	1.63 (41)
4200272.141309		Candy	29 1/2	0.52 (13)
4200272.142309	4205532.142309	Candy	8	2.37 (60)
4200272.145309	4205532.145309	Candy	5	3.50 (89)
4200272.147309	4205532.147309	Candy	4	4.38 (111)
4200272.148309	4205532.148309	Candy	3	5.80 (147)
4202313.100309		G&M	18/36	1.00 (25)
4202313.102309		G&M	24/48	0.71 (18)
4202313.103309		HiCap	30/60	0.50 (13)
4202313.104309		HiCap	24/48	0.71 (18)
4202313.105309		HiCap	18/36	1.00 (25)
4202313.106309		HiCap	15/30	1.22 (31)
4202313.107309		G&M	20/40	0.86 (22)
4202313.108309		HiCap	12/24	1.55 (39)

* SPECIFY COLOR
AR AS REQUIRED

† SPECIFY VOLTAGE/ HEATED/UN-HEATED
†† SPECIFY SOFTWARE VERSION

OPTIONAL PRICE SCROLLS

PRICE SCROLL PART NUMBER	SCROLL PRICE RANGE	COUNTRY
4217475.001	FREE AND .40 TO 2.35 (.05 INCREMENTS)	USA
4217475.002	1.5 TO 21.5 (.50 INCREMENTS)	MEXICO
4217475.003	.25 TO 10.25 (.25 INCREMENTS)	USA
4217475.004	1000 TO 3000 (50 INCREMENTS)	VENEZUELA
4217475.005	3000 TO 5000 (50 INCREMENTS)	VENEZUELA
4217475.006	FREE AND 2.40 TO 6.30 (10 INCREMENTS)	AUSTRALIA
421775.007	1.80 to 3.00 (.05 INCREMENTS) 3.00 TO 4.60 (.10 INCREMENTS)	USA

* SPECIFY COLOR
AR AS REQUIRED

† SPECIFY VOLTAGE/ HEATED/UN-HEATED
‡ SPECIFY SOFTWARE VERSION

NOTES

The contents of this publication are presented for informational purposes only, and while every effort has been made to ensure their accuracy, they are not to be construed as warranties or guarantees, express or implied, regarding the products or services described herein or their use or applicability. We reserve the right to modify or improve the designs or specifications of such products at any time without notice.



VendNet™
165 North 10th Street
Waukee, Iowa 50263
United States of America



	USA & Canada	International
Service	(800) 833-4411	(515) 274-3641
Parts	(888) 259-9965	
Email	vendnet@vendnetusa.com	
Web Site	www.vendnetusa.com	